

Solera 

by Light Efficient Design

FREE TO SHINE



PART #	COMPARES TO	WATTAGE	LUMENS	COLOR	EPA	DIMENSIONS	LISTINGS
HYBRID AREA LIGHT							
SL-SAL-HYB-30W-40K-SF-BK-G2	250W	30W	5900	4000K	4.45	FIXTURE 11.2" x 3.5" x 16.3" SOLAR PANEL 15.9" x 31.5"	
SL-SAL-HYB-50W-40K-SF-BK-G2	400W	50W	9800	4000K	6.1	FIXTURE 11.2" x 7.0" x 16.3" SOLAR PANEL 31.8" x 31.5"	
OFF-GRID AREA LIGHT							
RP-SAL-8W-50K-SF-GY-G2	70W	8W	1600	5000K	1.82	20.0" x 12.0" x 3.0"	
RP-SAL-8W-50K-SF-DB-G2							
RP-SAL-30W-50K-SF-GY-G2	250W	30W	6000	5000K	4.79	36.0" x 16.8" x 3.8"	
RP-SAL-30W-50K-SF-DB-G2							
RP-SAL-8W-AMB-SF-GY-G2	70W	8W	284	580nm AMBER	1.82	20.0" x 12.0" x 3.0"	
RP-SAL-8W-AMB-SF-DB-G2							
RP-SAL-30W-AMB-SF-GY-G2	250W	30W	806		4.79	36.0" x 16.8" x 3.8"	
RP-SAL-8W-AMB-SF-DB-G2							
SL-SAL-OG-30W-50K-SF-BK-G2	250W	30W	5900	5000K	4.45	FIXTURE 11.2" x 3.5" x 16.3" SOLAR PANEL 15.9" x 31.5"	
SL-SAL-OG-50W-50K-SF-BK-G2	400W	50W	9800	5000K	6.1	FIXTURE 11.2" x 7.0" x 16.3" SOLAR PANEL 31.8" x 31.5"	

OPERATING MODES | TIMER MOTION SENSING



SCAN FOR POLE OFFERINGS + ACCESSORIES

HYBRID 365 | POWERED BY THE SUN & BACKED UP BY LINE-VOLTAGE **OFF-GRID | 100% POWERED BY THE SUN**

AREA LIGHTS



SIX MODELS TO CHOOSE FROM WITH HID EQUIVALENCE FROM 70W TO 400W. The off-grid fixtures are powered entirely by the sun, requiring no trenching or wiring – free to shine. Hybrid models are powered by the sun and backed up by line-voltage for guaranteed light every night.



RP-SAL-50/30W ▲



SL-SAL-30W ▲



SL-SAL-50W ▲



5 YEAR WARRANTY



CERTIFIED BATTERY



RP-SAL



SL-SAL



RP-SAL



SL-SAL



BATTERY LIFE



REPLACEABLE BATTERY



REMOTE CONTROL



RP-SAL



SL-SAL



MOTION SENSING



100,000hrs RATED LIFE



INTELLIGENT MODULAR AREA LIGHT

PART #	LUMENS	COLOR	EPA	DIMENSIONS
SL-MA1-OG-1000634B1-TAA	ADJUSTABLE UP TO 10,000	3000K/4000K/5000K	8.0	SOLAR PANEL 27.1" x 19.2" x 2.2"
SL-MA1-HYB-1000634B1-TAA				

OPERATING MODES | CONSTANT BRIGHTNESS MOTION SENSING

HYBRID 365 | POWERED BY THE SUN & BACKED UP BY LINE-VOLTAGE OFF-GRID | 100% POWERED BY THE SUN



STANDARD



OPTIONAL*



CERTIFIED BATTERY



BATTERY CHARGE TIME



FULL POWER ALL NIGHT**



BATTERY CHARGE TEMP



BATTERY LIFE**



REPLACEABLE BATTERY



-40°F TO 140°F
FIXTURE OPERATING TEMP



OPTIONAL MOTION SENSING



100,000hrs RATED LIFE

* OPTIONAL 10 YEAR WARRANTY WILL HAVE AN ADDED COST. **BATTERY LIFE DEPENDS ON ENVIRONMENT AND POWER SETTINGS

INTELLIGENT MODULAR AREA LIGHT



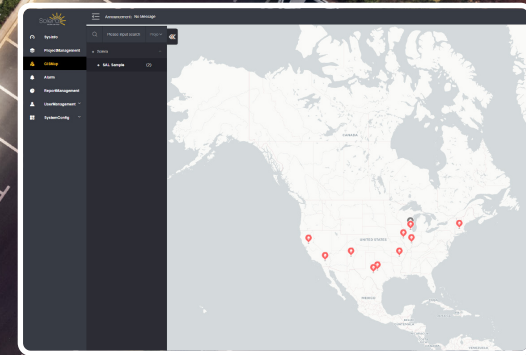
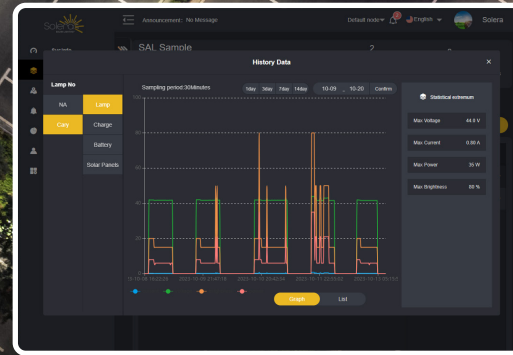
I-SERIES PROFESSIONAL GRADE, CONFIGURABLE, SOLAR POWERED LIGHTING SYSTEM. Build and remotely program, control and monitor an intelligent solar lighting network. Graphically show usage and demand. Track solar energy generation for sustainability reporting and possible tax credits.

- ... ACCESS SOLERA CONNECT VIA THE WEB OR MOBILE APP
- ... MONITOR LIGHT LEVELS THROUGHOUT THE DAY
- ... MAP YOUR PROJECTS

Hello
Welcome to use Solera Monitoring System 3.0 English

Remember Me

[Log In](#)



EXAMPLE OF CUSTOMER DASHBOARD

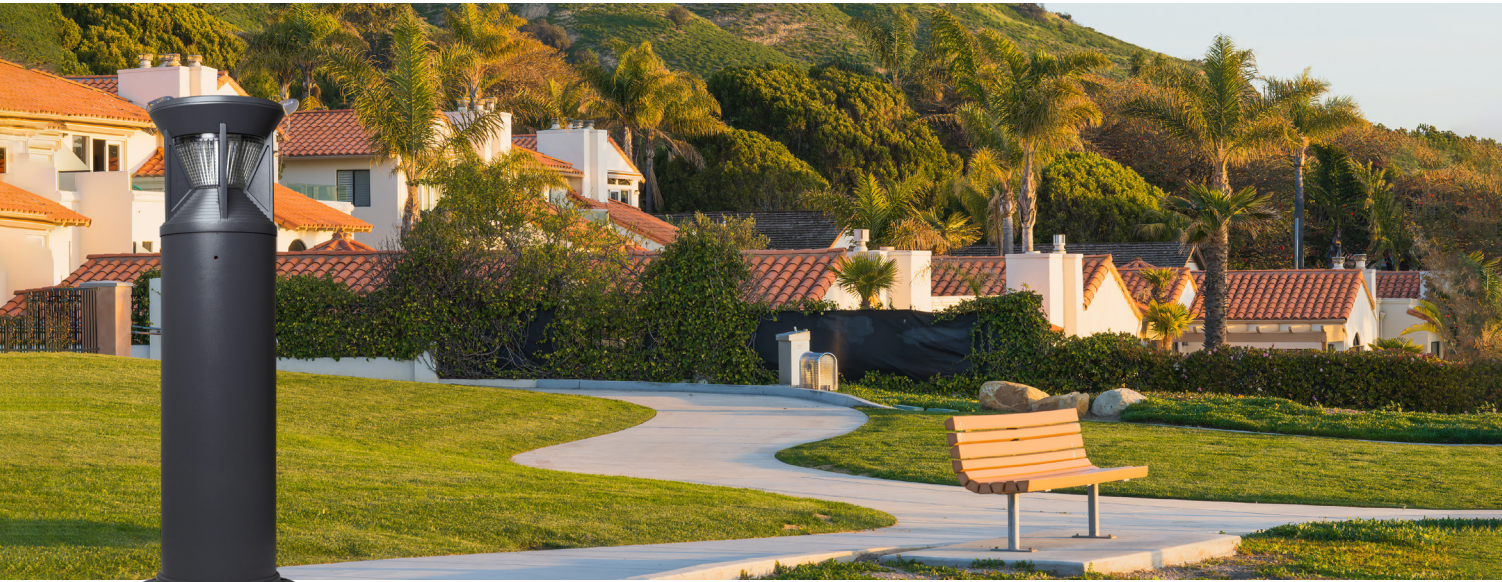
CONFIGURE THE INTELLIGENT MODULAR AREA LIGHT TO FIT YOUR APPLICATION Area lighting, pedestrian lighting, billboard lighting and more. Available as a retrofit kit for sites with existing poles or purchase with pole kit if needed.

REMOTELY SET UP YOUR NETWORK W/ SOLERA CONNECT Create one or more projects. Preset programming modes make programming lights and sensor settings quick and easy. Site grouping and custom control setup.

BI-DIRECTIONAL COMMUNICATION OVER A CELLULAR NETWORK Allows for remote monitoring and control of the solar collection, battery state, and lighting parameters. Each light included in a project is individually accessible. Get status updates to be alerted to unexpected conditions.



IMPROVE PEDESTRIAN SAFETY...



◀ SL-SBL-2W

OFF-GRID BOLLARD LIGHT

PART #	COMPARES TO	LUMENS	COLOR	DIMENSIONS	LISTINGS
SL-SBL-2W-27K-BK-G1	30W HALOGEN	266	2700K	8" x 30"	CE FC
SL-SBL-2W-40K-BK-G1			4000K		

OPERATING MODE | 🌙 DUSK TO DAWN



SL-SPT-20W ▲

OFF-GRID

PART #	COMPARES TO	LUMENS
SL-SPT-20W-30K-SF-G2	150W HID	2000
SL-SPT-20W-40K-SF-G2		

OPERATING MODES

🌙 DUSK TO DAWN 🕒 TIMER 🚶 MOTION SENSING



BATTERY CHARGE TIME



BATTERY CHARGING TEMP



BATTERY LIFE



BEAM ANGLE



-13°F TO 140°F

OPERATING TEMP



100,000hrs RATED LIFE



BATTERY CHARGE TIME



BATTERY CHARGING TEMP



BATTERY LIFE

BOLLARD + POST TOPS



THREE UNIQUE, OFF-GRID MODELS TO HELP LIGHT ANY AREA THAT NEEDS IT. The bollard is rugged and reliable, ready to light pathways, piers and more. Post tops have a classic decorative design and is brighter than you would expect.



↑ SL-CPT

POST TOP LIGHT

COLOR	DIMENSIONS	EPA	LISTINGS
3000K	16" x 32"	2.2	CE FC
4000K			

SCAN FOR POLE OFFERINGS + ACCESSORIES



OFF-GRID PATHWAY LIGHT

PART #	COMPARES TO	LUMENS	COLOR	DIMENSIONS	EPA	LISTINGS
SL-CPT-25L-30K-BK-G1	150W	2500	3000K	21.3" x 13.4"	1.0 SF	CE FC
SL-CPT-25L-40K-BK-G1			4000K			

OPERATING MODES

☀️ CONSTANT BRIGHTNESS ⌚ TIMER 🚶 MOTION SENSING

SCAN FOR POLE OFFERINGS + ACCESSORIES



BEAM ANGLE



-4°F TO 149°F

OPERATING TEMP



100,000hrs RATED LIFE

100,000hrs RATED LIFE



3 YEAR WARRANTY



7-8 HRS BATTERY CHARGE TIME



32°F TO 122°F BATTERY CHARGING TEMP



UP TO 30 HRS BATTERY LIFE *



160° BEAM ANGLE



-4°F TO 122°F

OPERATING TEMP



50,000hrs RATED LIFE

* ON 2HR + SENSOR MODE.



ADJUSTABLE – GET LIGHT EXACTLY WHERE YOU NEED IT...



← SL-SFL-20W



SL-SDL-20W ↑

OFF-GRID FLOOD LIGHT

PART #	COMPARES TO	LUMENS	COLOR	DIMENSIONS	ADJ HEIGHT	LISTINGS
SL-SFL-20W-40K-BK-G2	150W HID	2000	4000K	26" x 11" (PANEL w/LIGHT)	16" TO 21"	CE FC

OPERATING MODE | ☀️ CONSTANT BRIGHTNESS | ⌚️ TIMER

OFF-GRID

PART #	COMPARES TO	LUMENS
SL-SDL-2FT-40K-BK-G2	70W HID	750
SL-SDL-20W-40K-BK-G2	150W HID	2000

ACCESSORIES

RP-SDL-BK-LB | 7" CLAMP MOUNT BRKT (2 PK)

* INCLUDES SURFACE MOUNT BRACKET



BATTERY CHARGE TIME



BATTERY CHARGING TEMP



BATTERY LIFE



BEAM ANGLE



-4°F TO 140°F

OPERATING TEMP



50,000hrs RATED LIFE



BATTERY CHARGE TIME



BATTERY CHARGING TEMP



BATTERY LIFE

FLOOD + DISPLAY + MULTIFUNCTIONAL LIGHTS



THREE FLEXIBLE & POWERFUL, OFF-GRID MODELS UP TO 150W HID. Perfect for entrance signs, landscape features and more. The display light collects sun and cast light downwards. The flood light has an adjustable light array to aim at the desired object to illuminate.



← SL-SMFL-10W

DISPLAY LIGHT*

COLOR	DIMENSIONS	LISTINGS
4000K	23.6" x 4.3" x 4.3"	CE FC
4000K	47.2" x 4.3" x 4.3"	

OPERATING MODES

☀️ CONSTANT BRIGHTNESS | ⌚ TIMER

OFF-GRID MULTIFUNCTIONAL FLOOD LIGHT

PART #	COMPARES TO	LUMENS	COLOR	DIMENSIONS	LISTINGS
SL-SMFL-10W-40K-BK-G1	70W HID	1100	4000K	9.1" x 6.5" (LIGHT) 13.6" x 9.3" (PANEL)	CE FC

OPERATING MODES | ☀️ CONSTANT BRIGHTNESS | ⌚ TIMER | 🚶 MOTION SENSING



BEAM ANGLE



OPERATING TEMP



50,000hrs RATED LIFE



BATTERY CHARGE TIME



BATTERY CHARGING TEMP



BATTERY LIFE



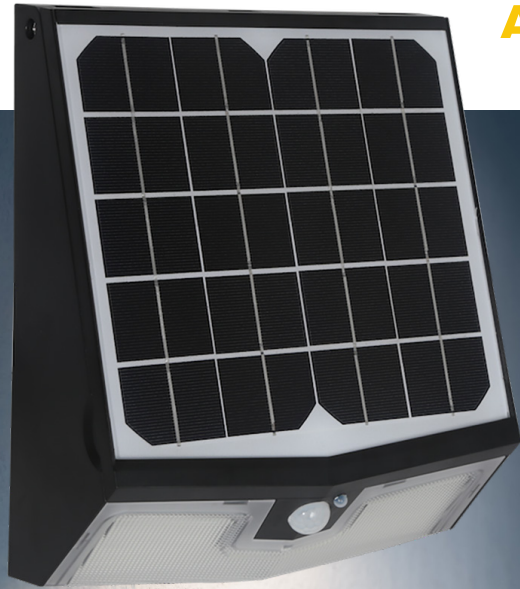
BEAM ANGLE



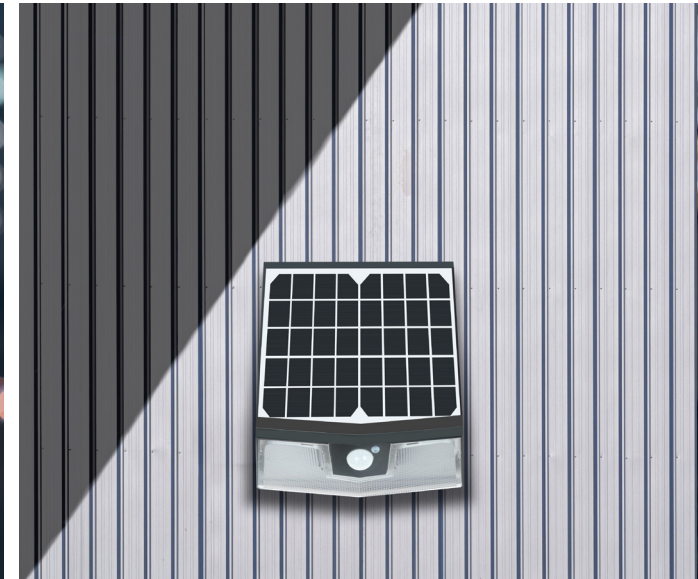
OPERATING TEMP



50,000hrs RATED LIFE



ALL-IN-ONE DESIGN...

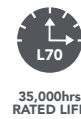
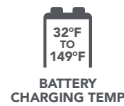


SL-SWL ↗

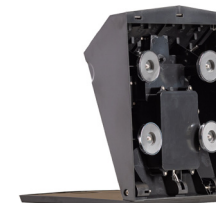
OFF-GRID WALL PACK

PART #	COMPARES TO	LUMENS	COLOR	DIMENSIONS	LISTINGS
SL-SWL-15W-40K-BK-G2	100W HID	1500	4000K	10" x 12" x 5"	CE FC
SL-SWL-15W-40K-BK-G2-M					

OPERATING MODES | DUSK TO DAWN TIMER MOTION SENSING



...MAKE IT MAGNETIC



EACH MAGNET HOLDS UP TO 35 LBS. FOR A TOTAL PULL STRENGTH OF 140 LBS.

MAGNETIC MOUNTING

WALL PACKS



OFF-GRID WALL PACKS TO HELP CAST LIGHT WHEREVER IT IS NEEDED. Large wall pack fixtures with adjustable solar panels provide powerful performance to the sides of buildings. Smaller wall pack lights can provide safety and security around decks, staircases and more.



BUILT-IN LED ENERGY INDICATOR

SL-SWL-20W

OFF-GRID MINI WALL PACK

PART #	COMPARES TO	LUMENS	COLOR	DIMENSIONS	LISTINGS
SL-SWL-20W-40K-BK-G2	150W HID	2000	4000K	8" x 5" x 3"	CE FC

OPERATING MODES | DUSK TO DAWN | TIMER | MOTION SENSING



BATTERY CHARGE TIME



BATTERY CHARGING TEMP



BATTERY LIFE



BEAM ANGLE



-13°F TO 140°F

OPERATING TEMP



35,000hrs RATED LIFE



CORPORATE HQ & TRAINING CENTER • CARY, IL | INNOVATION & MANUFACTURING CENTER • Middleton, MA
847.380.3540 • led-llc.com • sales@led-llc.com



solera-solar.com