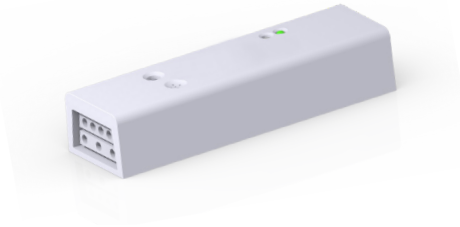




IN-LINE MICROWAVE AND DAYLIGHT HARVESTING OCCUPANCY SENSOR

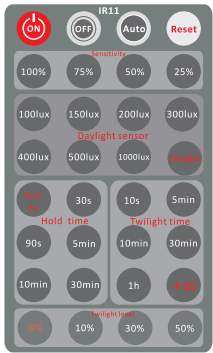
ORDERING **RP-LBI-OC2-A**, IN ADDITION TO THE LBI PART NUMBER, UPGRADES THE FIXTURE W/ A **SIMPLE CONTROL** EXTENDED-RANGE HIGH/LOW MICROWAVE SENSOR. IT ALSO COMES EQUIPPED W/ A DAYLIGHT HARVESTING SENSOR TO DIM AND/OR TURN OFF THE LBI WHEN THE SPACE IS UNOCCUPIED OR NATURAL SURROUNDING LIGHT LEVELS ARE HIGH.



ATTRIBUTES

DETECTION TECHNOLOGY	MICROWAVE
DETECTION TYPE	OCCUPANCY
SENSOR POWER	12VDC
GROUPABLE	NO
NETWORK LIGHTING CONTROL	NO
COMISSIONING METHOD	IR REMOTE
REMOTE	IR11
DAYLIGHT HARVESTING	YES
HI OR LOW TRIM	NO
BI-LEVEL DIMMING	YES
NETWORK TECHNOLOGY	NONE
INSTALLATION TYPE	INTERNAL
DLC LISTED	YES
CONTROL CAPACITY	15 BARS

IR11 REMOTE



ON Permanent ON/OFF Function

OFF Permanent OFF

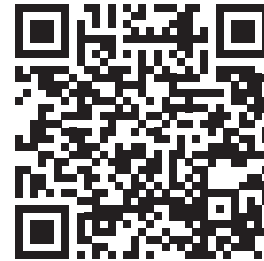
Auto Sensor Mode

Reset Reset Function

Disable Disable Daylight Sensor

Test Test Mode

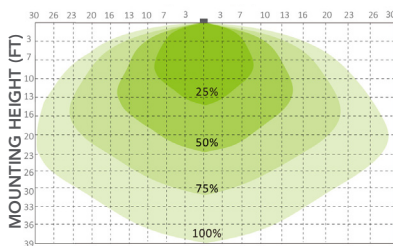
FOR MORE INFORMATION ON THE IR11 REMOTE SCAN BELOW



DETECTION PATTERN / RP-LBI-OC2-A

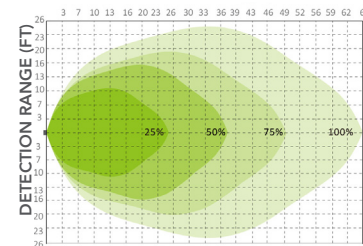
CEILING MOUNTING

DETECTION RANGE (FT)



WALL MOUNTING

DETECTION DISTANCE (FT)



DAYLIGHT HARVESTING / RP-LBI-OC2-A

Sensor detects the difference between natural light and artificial light (lamp) from behind the diffuser, switch on automatically (even w/o movements) when the ambient light is below the target value, and switch off automatically whenever the artificial light is not required (ambient light is bright enough level).

NOTE LUX-OFF SAMPLING TIME - 30S. LUX-ON SAMPLING TIME - 10S. LUX-ON FUNCTION WILL ONLY OPERATE WITHOUT MOTION WHEN STANDBY IS SET TO + ∞.

