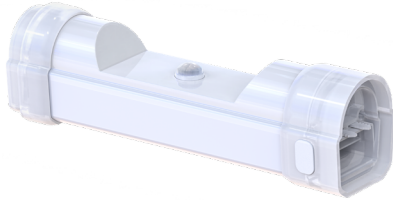




IP65 IN-LINE PASSIVE INFRARED OCCUPANCY SENSOR

ORDERING **RP-LBI65-PIR-A**, IN ADDITION TO THE LBI 65 PART NUMBER, UPGRADES THE FIXTURE W/ A **SIMPLE CONTROL** IN-LINE PASSIVE INFRARED OCCUPANCY SENSOR.



ATTRIBUTES

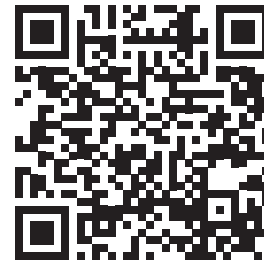
DETECTION TECHNOLOGY	PASSIVE INFRARED (PIR)
DETECTION TYPE	OCCUPANCY
SENSOR POWER	12VDC
GROUPABLE	NO
NETWORK LIGHTING CONTROL	NO
COMMISSIONING METHOD	IR REMOTE
REMOTE	IR11
DAYLIGHT HARVESTING	YES
HI OR LOW TRIM	NO
BI-LEVEL DIMMING	YES
NETWORK TECHNOLOGY	NONE
INSTALLATION TYPE	INTERNAL
DLC LISTED	YES
CONTROL CAPACITY	15 BARS

IR11 REMOTE



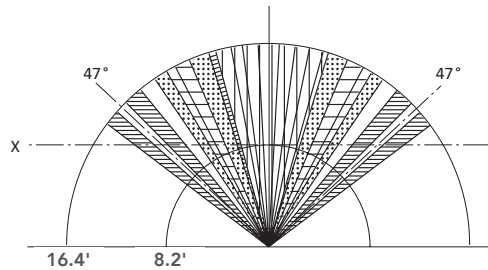
- ON** Permanent ON/OFF Function
- OFF** Permanent OFF
- Auto** Sensor Mode
- Reset** Reset Function
- Daylight** Disable Daylight Sensor
- Test** Test Mode

FOR MORE INFORMATION ON THE IR11 REMOTE SCAN BELOW

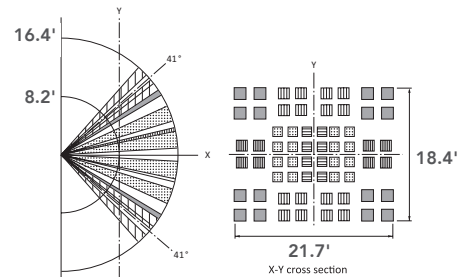


DETECTION PATTERN / RP-LBI65-PIR-A

TOP VIEW



SIDE



DAYLIGHT HARVESTING / RP-LBI65-PIR-A

Sensor detects the difference between natural light and artificial light (lamp) from behind the diffuser, switch on automatically (even w/o movements) when the ambient light is below the target value, and switch off automatically whenever the artificial light is not required (ambient light is bright enough).

NOTE LUX-OFF SAMPLING TIME - 30S. LUX-ON SAMPLING TIME - 10S. LUX-ON FUNCTION WILL ONLY OPERATE WITHOUT MOTION WHEN STANDBY IS SET TO + ∞.

