



PRIOR TO INSTALLATION, PLEASE READ THE ENTIRE INSTALLATION INSTRUCTIONS

WARNING

TURN OFF POWER BEFORE INSTALLATION FAILURE TO DO SO WILL CREATE A HAZARDOUS AND FATAL WORKING ENVIRONMENT.

RISK OF FIRE OR ELECTRIC SHOCK READ INSTRUCTIONS COMPLETELY AND CAREFULLY BEFORE INSTALLING LED T5 TUBE. TO AVOID PERSONAL INJURY AND/OR PRODUCT DAMAGE, ALL OF THE INSTRUCTIONS BELOW MUST BE FOLLOWED.

IF THE TUBE IS INSTALLED AS TYPE B, THE LUMINAIRE, ONCE MODIFIED AS A RETROFIT FIXTURE, WILL NO LONGER OPERATE FLUORESCENT LAMPS. "THIS LUMINAIRE HAS BEEN MODIFIED AND CAN NO LONGER OPERATE THE ORIGINALLY INTENDED LAMP," SHALL BE MARKED ON THE RETROFIT LUMINAIRE WHERE READILY VISIBLE BY THE USER DURING NORMAL MAINTENANCE INCLUDING LAMPING.

LED T5 TUBE(S) ARE DESIGNED TO WORK WITH AC DIRECT WIRE SINGLE AND DOUBLE ENDED POWER INPUTS.

SUITABLE FOR DRY OR DAMP LOCATIONS. NOT FOR USE WHERE DIRECTLY EXPOSED TO THE WATER OR WEATHER.

DO NOT USE IF PRODUCT IS DAMAGED.

120V REVERSE PHASE DIMMABLE DOWN TO 10%. VISIT WWW.LED-LLC.COM FOR FULL WARRANTY DETAILS AND DIMMER COMPATIBILITY INFORMATION.

CAUTION — RISK OF FIRE IF THE LAMP OR LUMINAIRE EXHIBITS UNDESIRABLE OPERATION (BUZZING, FLICKERING ETC.) IMMEDIATELY TURN OFF POWER, REMOVE LAMP FROM LUMINAIRE AND CONTACT MANUFACTURER.

THIS DEVICE IS NOT INTENDED FOR USE WITH EMERGENCY EXIT

TYPE B LAMP — INTENDED FOR OPERATION IN LUMINAIRES WITH TRADITIONAL FLUORESCENT-TYPE LAMP HOLDERS WIRED DIRECTLY TO THE BRANCH CIRCUIT. THIS INCLUDES BOTH FACTORY-WIRED LUMINAIRES AS WELL AS THOSE CONVERTED TO THIS PURPOSE UNDER A RETROFIT PROGRAM.

RISK OF FIRE OR ELECTRIC SHOCK LED RETROFIT KIT INSTALLATION REQUIRES KNOWLEDGE OF LUMINAIRE ELECTRICAL SYSTEMS. IF NOT QUALIFIED, DO NOT ATTEMPT INSTALLATION. CONTACT A QUALIFIED ELECTRICIAN. INSTALLATION SHOULD BE PERFORMED ONLY BY A QUALIFIED ELECTRICIAN IN ACCORDANCE WITH NATIONAL ELECTRICAL CODE AND RELEVANT LOCAL CODE.

RISK OF FIRE OR ELECTRIC SHOCK INSTALL THIS KIT ONLY IN THE LUMINAIRES THAT HAVE THE CONSTRUCTION FEATURES AND DIMENSIONS WRITTEN AND SHOWN IN THE PHOTOGRAPHS AND OR DRAWINGS AND WHERE THE INPUT RATING OF THE RETROFIT KIT DOES NOT EXCEED THE INPUT RATING OF LUMINAIRE.

DO NOT MAKE OR ALTER ANY OPEN HOLES IN AN ENCLOSURE OF WIRING OR ELECTRICAL COMPONENTS DURING KIT INSTALLATION.

TO PREVENT WIRING DAMAGE OR ABRASION, DO NOT EXPOSE WIRING TO EDGES OF SHEET METAL OR OTHER SHARP OBJECTS.

INSTALLERS SHOULD NOT DISCONNECT EXISTING WIRES FROM LAMP HOLDER TERMINALS TO MAKE NEW CONNECTIONS AT TERMINALS. INSTEAD, INSTALLERS SHOULD CUT EXISTING LAMP HOLDER LEADS AWAY FROM THE LAMP HOLDER AND MAKE NEW ELECTRICAL CONNECTIONS TO LAMP HOLDER LEAD WIRES BY EMPLOYING APPLICABLE CONNECTIONS.

FOR A LINEAR TUBULAR LED LAMP CONVERSION, THERE SHALL BE TEXT OR A DIAGRAM SHOWING HOW THE SUPPLY CONNECTIONS WERE MADE TO THE LAMP HOLDERS SO THE CORRECT CONNECTIONS WILL BE MADE TO THE LAMP WHEN THE LAMP IS INSTALLED OR REPLACED.

THIS RETROFIT KIT IS ACCEPTED AS A COMPONENT OF A LUMINAIRE WHERE THE SUITABILITY OF THE COMBINATION SHALL BE DETERMINED BY AUTHORITIES HAVING JURISDICTION.



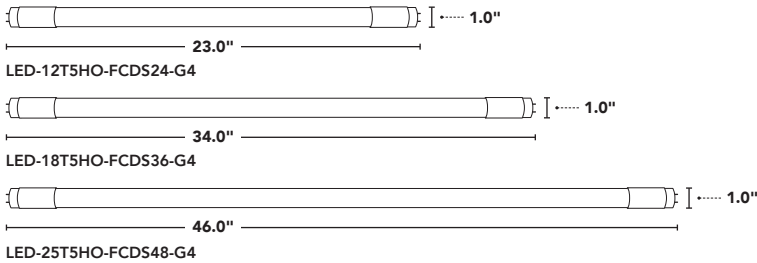
PRIOR TO INSTALLATION, PLEASE READ THE ENTIRE INSTALLATION INSTRUCTIONS

MEETS REQUIREMENTS OF ICES-005 ISSUE 5 CLASS A FOR USE IN COMMERCIAL APPLICATIONS.

COMPLIES WITH PART 15 OF FCC. OPERATION IS SUBJECT TO THE FOLLOWING TWO CONDITIONS: THIS DEVICE MAY NOT CAUSE HARMFUL INTERFERENCE, AND THIS DEVICE MUST ACCEPT ANY INTERFERENCE RECEIVED INCLUDING INTERFERENCE THAT MAY CAUSE UNDESIRABLE OPERATION.

PRODUCTS

PART #	DESCRIPTION
LED-12T5HO-FCDS24-G4	12W 4CCT 24-INCH TYPE B
LED-18T5HO-FCDS36-G4	18W 4CCT 36-INCH TYPE B
LED-25T5HO-FCDS48-G4	25W 4CCT 48-INCH TYPE B



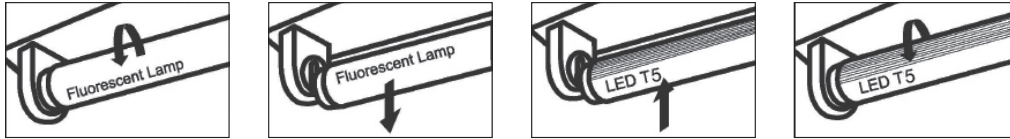
**REVERSE-PHASE DIMMER
COMPATIBILITY LIST**

BRAND	MODEL NUMBER
LUTRON	DVELV-300P-BR
LUTRON	DVELV-300P-GR
LUTRON	DVELV-300P-IV
LUTRON	DVELV-300P-LA
LUTRON	DVELV-300P-WH
LUTRON	DVELV-303P-BR
LUTRON	DVELV-303P-GR
LUTRON	DVELV-303P-IV
LUTRON	DVELV-303P-LA
LUTRON	DVELV-303P-WH
LUTRON	MAELV-600-AL
LUTRON	MAELV-600-BL
LUTRON	MAELV-600-BR
LUTRON	MAELV-600-GR
LUTRON	MAELV-600-IV
LUTRON	MAELV-600-LA
LUTRON	MAELV-600-WH

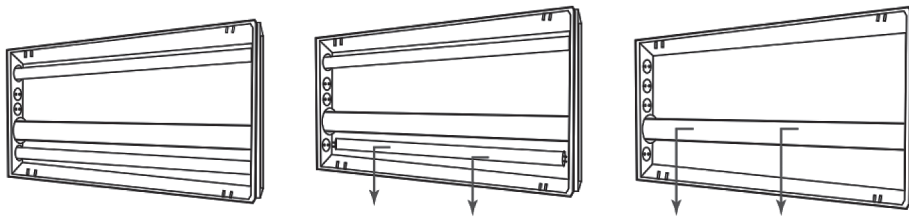


PRIOR TO INSTALLATION, PLEASE READ THE ENTIRE INSTALLATION INSTRUCTIONS

1. TURN POWER OFF — ENSURE ALL POWER IS OFF BY USING A VOLTMETER OR OTHER APPROVED METHOD
2. REMOVE TROFFER LENS (IF APPLICABLE)
3. REMOVE EXISTING FLUORESCENT LAMP BY ROTATING ONE-QUARTER TURN



4. REMOVE BALLAST COVER (COVER MAY BE SECURED WITH SCREWS OR TABS)

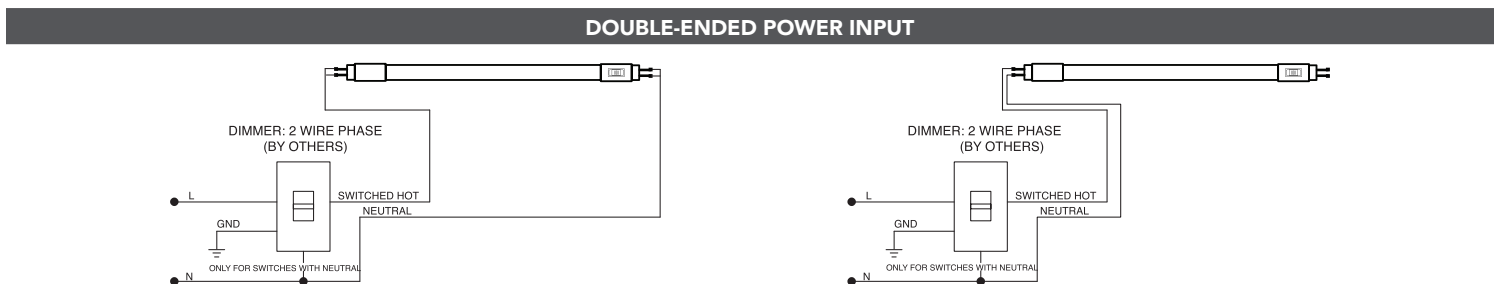


5. RETROFIT FIXTURE ACCORDING TO LAMP DIAGRAMS SHOWN

DIRECT AC WIRING DIAGRAM WITHOUT DIMMING



DIRECT AC WIRING DIAGRAM WITH REVERSE-PHASE (ELV) DIMMER



NOTE: FOR DETAILED APPLICATIONS, PLEASE REFER TO THE DIMMER INSTRUCTION MANUAL

6. INSTALL THE LED LAMP(S) BY SLIDING PINS INTO SOCKET AND ROTATING CLOCKWISE ONE-QUARTER TURN
7. REPLACE TROFFER LENS (IF APPLICABLE) AND ATTACH REPLACEMENT LABEL IN A VISIBLE LOCATION
8. TURN POWER ON