

**IMPORTANT**

READ CAREFULLY BEFORE INSTALLING FIXTURE. RETAIN THESE INSTRUCTIONS FOR FUTURE REFERENCE.

Installers should examine all parts that are not intended to be replaced by the retrofit kit for damage and replace any damaged parts prior to installation of the retrofit kit.

WARNING - Risk of fire or electric shock. Luminaire wiring and electrical parts may be damaged when drilling for installation of LED retrofit kit. Check for enclosed wiring and components.

WARNING – RISK OF FIRE OR ELECTRIC SHOCK. THIS PRODUCT MUST BE INSTALLED IN ACCORDANCE WITH THE APPLICABLE INSTALLATION CODE BY A PERSON FAMILIAR WITH THE CONSTRUCTION AND OPERATION OF THE PRODUCT AND THE HAZARDS INVOLVED. IF NOT QUALIFIED, DO NOT ATTEMPT INSTALLATION. CONTACT A QUALIFIED ELECTRICIAN.

WARNING - Risk of fire or electric shock. Install this kit only in luminaires that have the construction features and dimensions shown in the photographs and/or drawings.

Only those open holes indicated in these instructions may be made or altered as a result of kit installation. Do not leave any other open holes in an enclosure of wiring or electrical components.

WARNING - To prevent wiring damage or abrasion, do not expose wiring to edges of sheet metal or other sharp objects.

“WARNING – Risk of fire. Input ratings may need to be determined based on any configuration(s) permitted by the installation instructions. Regardless of the configuration(s) of the retrofit kit, the input ratings of the overall retrofit kit shall not exceed the marked input ratings of the host luminaire.

The installation instructions shall indicate this retrofit kit is suitable for damp locations

TAA

5

YEAR WARRANTY

120-277V

0-10V

80+

EMG

110°

-4°F to 104°F

2.5kA

50,000hrs RATED LIFE

DIMMING

CRI

OPTIONAL EMG BATTERY BACKUP

BEAM ANGLE

OPERATING TEMP

SURGE PROTECTION

| PART # | UPC | DESCRIPTION | LUMENS | WATTAGE | CCT |
|---------------------------|--------------|-----------------------------|----------------|--------------------------------|---------------------------------------|
| RP-TRF-1X4-24W-40K-WC-TAA | 197810030775 | 1X4 FLAT PANEL RETROFIT KIT | 2000/2500/3000 | FLEXWATT 16W/20W/24W | FLEXCOLOR 3500K/4000K/5000K |
| RP-TRF-2X2-24W-40K-WC-TAA | 19781001595 | 2X2 FLAT PANEL RETROFIT KIT | | | |
| RP-TRF-2X4-40W-40K-WC-TAA | 19781001596 | 2X4 FLAT PANEL RETROFIT KIT | 3000/3750/5000 | FLEXWATT 24W/30W/40W | |



**IMPORTANT**

Prior to installation, review all environmental designation locations in the retrofit kit installation instructions. Only install in damp locations.

THE RETROFIT KIT IS ACCEPTED AS A COMPONENT OF A LUMINAIRE WHERE THE SUITABILITY OF THE COMBINATION SHALL BE DETERMINED BY AUTHORITIES HAVING JURISDICTION. PRODUCT MUST BE INSTALLED BY A QUALIFIED ELECTRICIAN IN ACCORDANCE WITH THE APPLICABLE AND APPROPRIATE ELECTRICAL CODES. THE INSTALLATION GUIDE DOES NOT SUPERSEDE LOCAL OR NATIONAL REGULATIONS FOR ELECTRICAL INSTALLATIONS.

For use with recessed type IC luminaires.

RP-TRF-1X4 is suitable for use with luminaires with 11.9 x 47.7 x 3.15 in. lamp compartment.

RP-TRF-2X2 is suitable for use with luminaires with 23.7 x 23.7 x 3.15 in. lamp compartment.

RP-TRF-2X4 is suitable for use with luminaires with 23.7 x 47.7 x 3.15 in. lamp compartment.

Suitable for operation in luminaires with ambient not exceeding 104° F.



1.PRODUCT DESCRIPTION

Our Troffer Retrofit Kits have a new multipiece design and are easier to install than the competition. Packed with flex features and available in flat panel or volumetric design, Troffer retrofit kits are available in 2x2 and 2x4 sizes. The troffer retrofit is Lumen and CCT selectable, and comes with the accessories needed to retrofit existing luminaires.

2.APPLICATIONS

Office , Meeting Rooms , Hospitals, etc

3.PRODUCTION LIST

| PART NUMBER BUILDER | | | | | | | | |
|---------------------|---------|------------|-----------------|-------------|------------------------------------|--|--|--|
| MFR | PRODUCT | SIZE (FT.) | DEFAULT WATTAGE | DEFAULT CCT | FUNCTION | OPTIONS | LISTING | EMG |
| RP | | | | 40K | WC | | TAA | EM1 |
| | TRF | 1X4 | 24W | 40K = 4000K | WC = WATTAGE + COLOR SELECTABLE | OCC = PIR OCCUPANCY SENSOR OCCBT = NETWORK LIGHTING CONTROL (PIR OCCUPANCY SENSOR) ⓘ | TAA = TRADE ACT AGREEMENT COMPLIANT | EM1 = 4W, 500 LUMENS, 90 MIN EMERGENCY BATTERY BACKUP |
| | | 2X2 | | | | | | |
| | | 2X4 | 40W | | | | | |

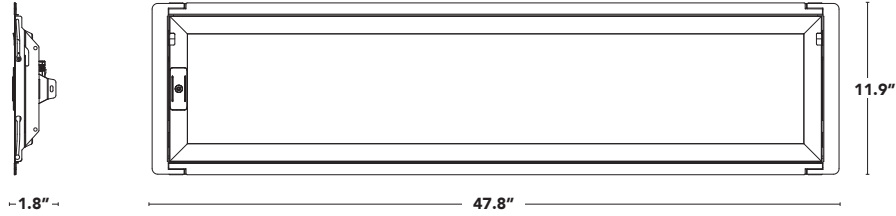
EXAMPLE PART NUMBER RP-TRF-2X2-24W-40K-WC-OCC-TAA-EM1

4.OTHER CHARACTERISTICS

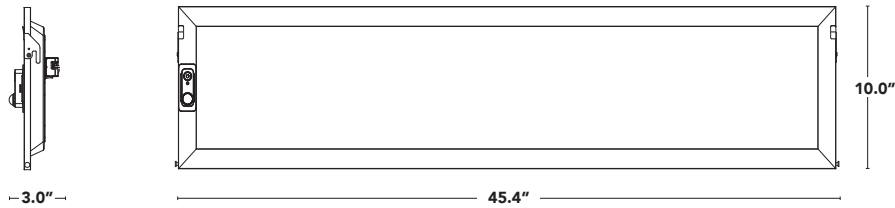
| ITEM | RATED VALUE |
|---------------------------|--------------------------------|
| INPUT VOLTAGE | 120-277 VAC |
| FREQUENCY | 50/60 HZ |
| POWER FACTOR | 0.9 |
| TOTAL HARMONIC DISTORTION | <20% |
| LIFETIME (L70/B50) | 50,000 HOURS |
| AMBIENT TEMPERATURE RANGE | -4°F TO 104°F |
| STORAGE TEMPERATURE | -4°F TO 176°F |
| IP PROTECTION | IP20 |
| DIMMING | 0-10V (CAN DIM TO OFF AT 0.2V) |



5.PRODUCT DIMENSIONS



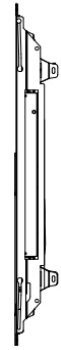
1X4 NO SENSORS WITH INSTALLATION BRACKETS



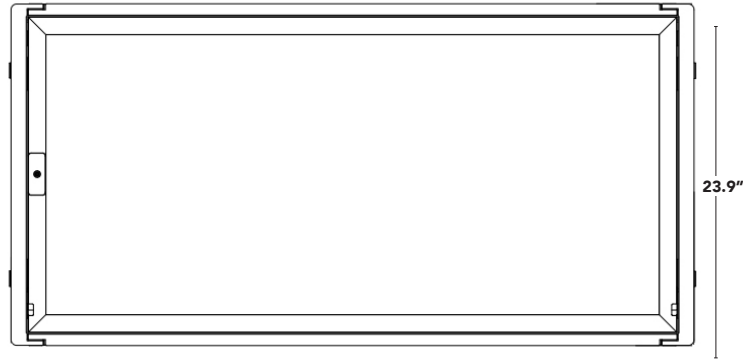
1X4 WITH PIR SENSOR WITHOUT INSTALLATION BRACKETS



5.PRODUCT DIMENSIONS



2.1"



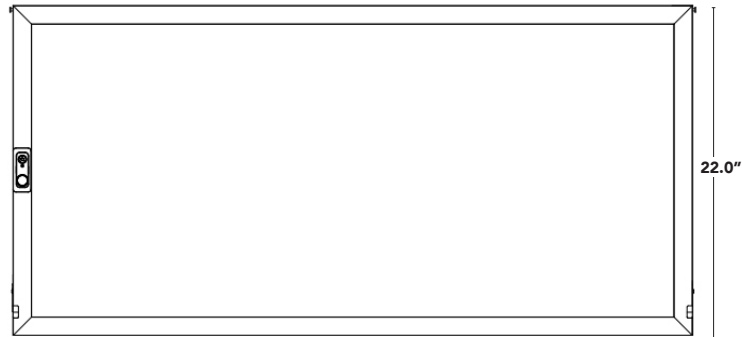
47.8"

23.9"

2X4 NO SENSORS WITH INSTALLATION BRACKETS



2.4"



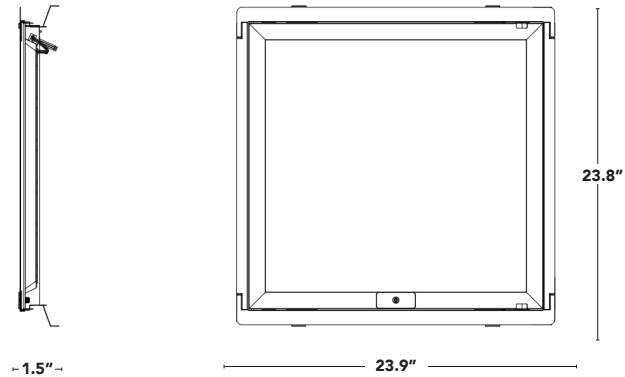
45.4"

22.0"

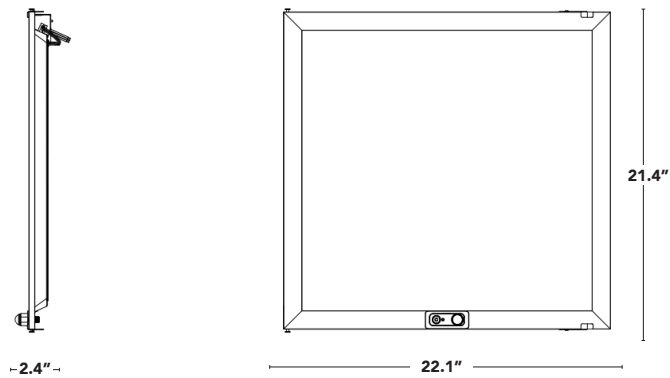
2X4 WITH PIR SENSOR WITHOUT INSTALLATION BRACKETS



5.PRODUCT DIMENSIONS



2X2 NO SENSORS WITH INSTALLATION BRACKETS



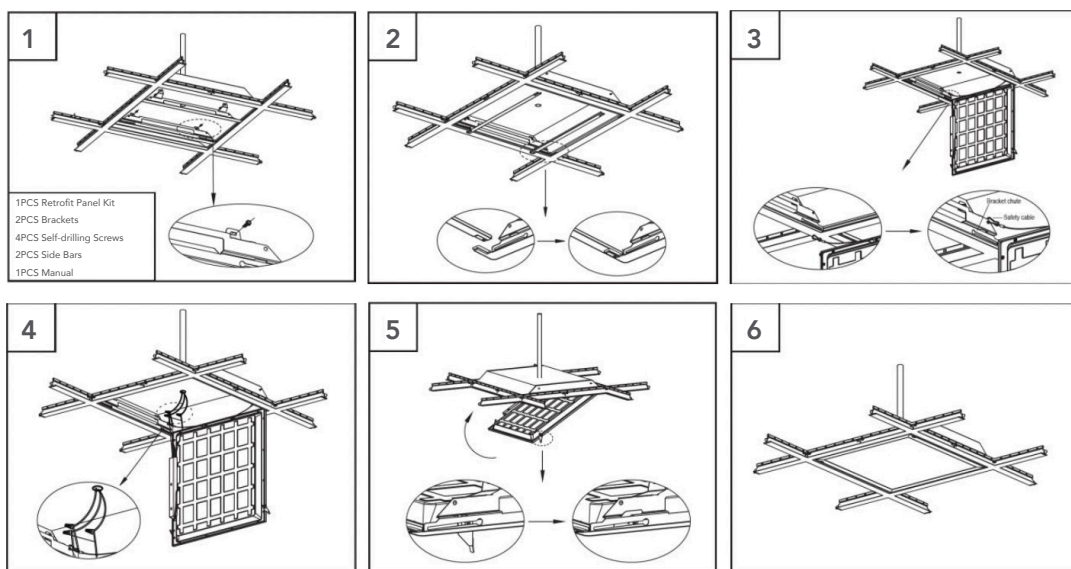
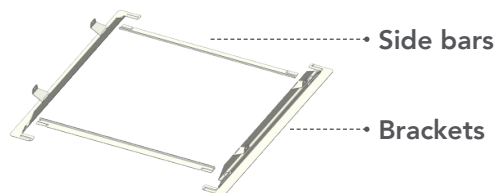
2X2 WITH PIR SENSOR WITHOUT INSTALLATION BRACKETS



6.INSTALLATION

Remove the accessories from the original housing (ballast, fluorescent tube, sockets, brackets, and other accessories that may interfere with the installation). Note: The original housing must remain in place. Set aside the input wires (line and neutral) of original housing so they can be connected to the retrofit kit in a later step. Plug previous holes from the ballast with appropriate screws and wire nuts.

1. Insert both brackets into the fixture edges between the housing and the T-grid. secure the brackets to the fixture using the provided 8x5/8" self-drilling screws. There are two hole sets to allow for clearing fixture features that may obstruct the screws. **(Fig.1)**
2. Insert both side bars into the panel edges between the brackets and the T-grid. **(Fig.2)**
3. Insert the rotary screws on the edge of the Troffer kit into the bracket chutes. Push to the end in the direction of the chutes to secure panel. Attach the safety cables from the retrofit kit to the brackets. **(Fig.3)**
4. Connect the line and neutral wires from the original housing to the driver of the retrofit using appropriate connectors (see above diagram for wire identification). If using 0-10V dimmer, connect DIM+ & DIM- to 0-10V dimmer wires coming from the driver. Ensure the fixture is grounded by connecting the green ground wire of the retrofit kit to the green wire of the original housing with a wiring cap. **(Fig.4)**
5. Secure the door assembly body by lock the latches riveted on each end of the assembled door frame. **(Fig.5)**
6. Installation completed. **(Fig.6)**





WIRING DIAGRAM

GENERAL WIRING DIAGRAM

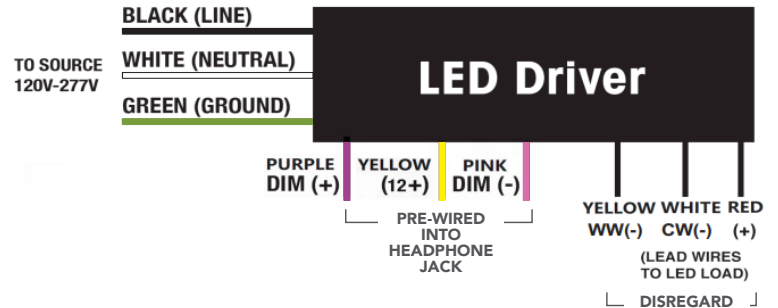
CAUTION: Turn off electrical power at fuse or circuit breaker box before wiring fixture to the power supply.

Connecting panels to AC source supply: All units must be individually connected to the AC Supply.

Operating characteristics:

Voltage input: 120/277V 50/60 Hz

Operating temp: -40°F to 104°F



PROGRAMMABLE CONSTANT POWER LED DRIVER WIRING DIAGRAM/DIMENSIONS

