

MODULAR DESIGN

FITS ON A
2-3/8" TENON

THE SOLERA AREA LIGHT FEATURES A SLEEK AND INTEGRATED DESIGN FOR EASY INSTALLATION AND GREAT PERFORMANCE. Built to be self-powered, eliminating the need for trenching & wiring. High-performance solar controller maximizes solar charge under all conditions.

- Perfect for parks, parking lots, school campuses, and more
- Advanced new LiFePO4 battery lasts at least 2000 charge cycles and will last up to three nights with one day charge (motion sensing mode)
- Compares to 400W HID
- Easily programmable via remote control (available for purchase)
- Custom programs are available. Please contact Solera Tech Support at solera-ts@led-llc.com
- Built-in motion sensor, photo control & status indicator
- Exceptional cold weather performance due to low temperature battery chemistry
- Includes light head w/ slip fitter & solar panels w/ integrated batteries and bracket

FLEXCOLOR
SWITCH BETWEEN 3 CCTs



BATTERY
CHARGE TIME

BATTERY
LIFE

BATTERY
CHARGE TEMP

OPERATING TEMP

REPLACEABLE
BATTERY

TYPE III
OPTICS

50,000hrs
RATED LIFE

PART #	UPC*	COMPARABLE TO	LUMENS	CCT	DIMENSIONS**	WEIGHT	EPA
SL-SAL-100L-FC-T3-BK-G3	197810015024	400W HID	10,000	FLEXCOLOR 3000K/4000K/5000K	40" X 39" X 35"	75 LBS.	6.5

OPERATING MODES



TIMER



MOTION SENSING

*PRODUCT SHIPS IN 2 CARTONS **DIMENSIONS ARE BASED ON MOST POPULAR CONFIGURATION

Light Efficient Design

847.380.3540 • led-llc.com • sales@led-llc.com



solera-solar.com



G3 SOLAR AREA LIGHT | OFF-GRID

LIGHT ENGINE

LED	192 LED. 3030 HIGH EFFICACY
MAX. POWER	50W
EFFICACY	160+ LUMENS PER WATT
CRI	70+
MAX. LUMENS	10,000 LUMENS
CCT	3000K, 4000K, 5000K SELECTABLE
CONTROLLER	MPPT CHARGE CONTROLLER
OPTICS OPTIONS	TYPE 2, TYPE 3, TYPE 4, TYPE 5
SHEILD OPTIONS	BACK LIGHT SHIELD, FULL CUTOFF SHIELD

BATTERY

TYPE	DUAL LIFEPO4
CHARGING TEMP	-4° TO 140°F
DISCHARGING TEMP	-40° TO 140°F
REPLACEABLE	YES
CHARGE CYCLES	2000+
CHARGE VOLTAGE	14.6V
AMPERE-HOURS	47 TOTAL
WATT HOURS	600 TOTAL
WEIGHT	5.8LBS EACH
BMS SYSTEM	ONBOARD FULL PROTECTION

SOLAR PANEL

TYPE	DUAL PANELS - MONOCRYSTALLINE
WATTS	55W PER PANEL
VOLTAGE	12V
ADJUSTABLE	ANGLE AND ROTATION ARE FULLY ADJUSTABLE
CHARGE TIME	6 HOURS
DIMENSIONS	26.2" X 19.2" X 1.7"
WEIGHT	28.0 LB (INCLUDING BATTERY)
INGRESS PROTECTION	IP65

AREA LIGHT ASSEMBLY

DESCRIPTION	50W / 10,000 LUMEN AREA LIGHT
EPA	6.5
WEIGHT	75 LB

SOLAR AREA LIGHT ACCESSORIES

PART #	UPC	DESCRIPTION
SL-AL1-SHIELD-1	197810025320	BACK LIGHT SHIELD
SL-AL1-SHIELD-2	197810025337	FULL CUTOFF SHIELD
SL-AL1-LENS-T2	197810025344	LENS SET TYPE 2 OPTICS
SL-AL1-LENS-T3 *	197810025351	LENS SET TYPE 3 OPTICS
SL-AL1-LENS-T4	197810025368	LENS SET TYPE 4 OPTICS
SL-AL1-LENS-T5	197810025375	LENS SET TYPE 5 OPTICS
SL-C-100L-G3-PANEL **	197810030256	REPLACEMENT BATTERY

* AREA LIGHT IS SHIPPED WITH TYPE 3 LENSES INSTALLED

** REPLACEMENT BATTERY INCLUDES SOLAR PANEL FOR EASY INSTALLATION

REMOTE CONTROL

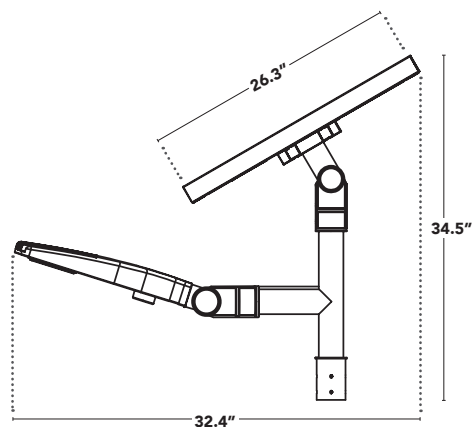
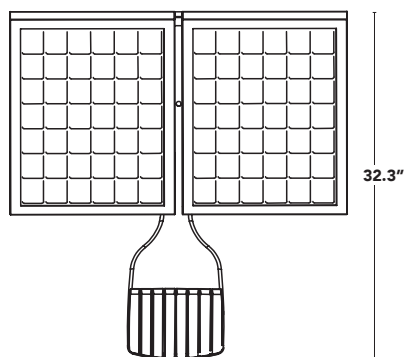
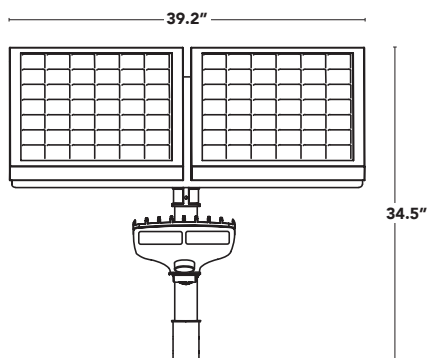
PART #	UPC	DESCRIPTION
SL-SAL-REMOTE-100L-G3-D	197810030461	REMOTE CONTROL FOR SL-SAL-100L-G3 DEFAULT PROGRAM: 2 HOURS AT 80% CONSTANT FOLLOWED BY SENSOR MODE 80% HIGH / 20% IDLE *

* FOR CUSTOM PROGRAMMING, PLEASE SEND A REQUEST TO TECH SUPPORT (SOLERA-TS@LED-LLC.COM)

Light Efficient Design

847.380.3540 • led-llc.com • sales@led-llc.com




DIMENSIONS



Light Efficient Design

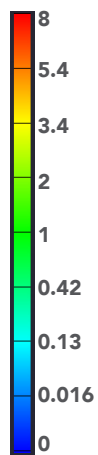
847.380.3540 • led-llc.com • sales@led-llc.com

PHOTOMETRICS - DEFAULT CONFIGURATION*

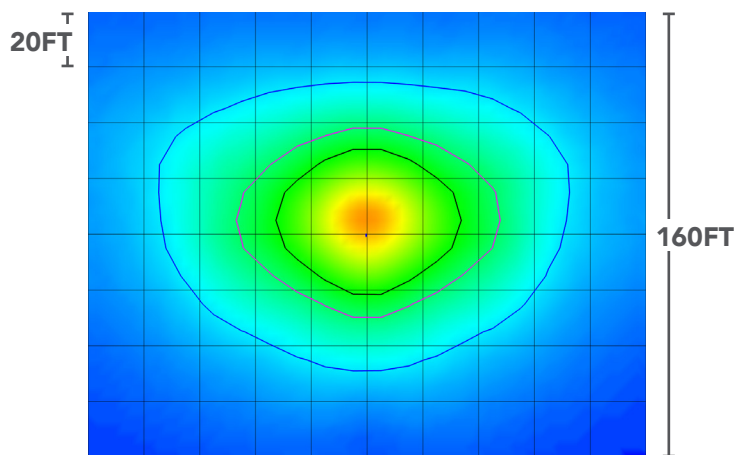
FOOT CANDLES	ISO-LINE COLOR	
1 FC	BLACK	
0.5 FC	MAGENTA	
0.1 FC	BLUE	

* T3 IS DEFAULT LENS W/ LIGHT OUTPUT SET TO 80%

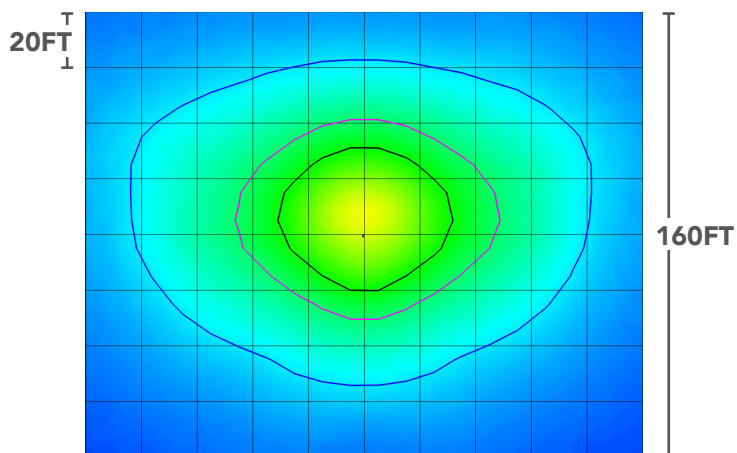
ILLUMINANCE (FC)



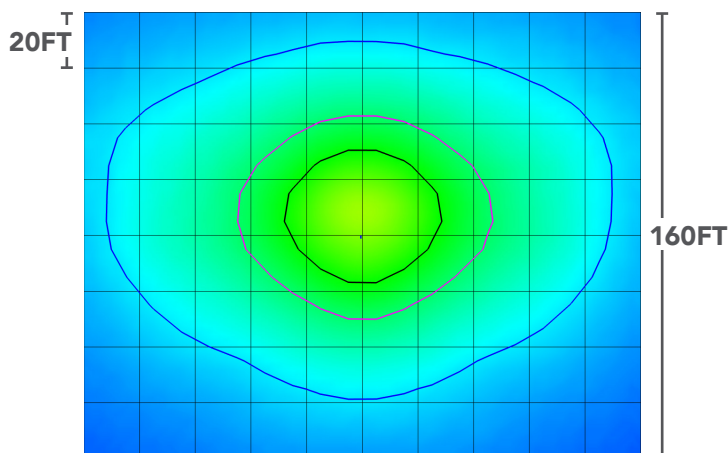
MOUNTING HEIGHT : 20 FT



MOUNTING HEIGHT : 25 FT






MOUNTING HEIGHT : 30 FT



Light Efficient Design

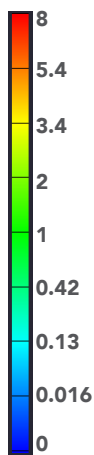
847.380.3540 • led-llc.com • sales@led-llc.com

PHOTOMETRICS - OPTIONAL LENSES AND SHIELDS

FOOT CANDLES	ISO-LINE COLOR	
1 FC	BLACK	
0.5 FC	MAGENTA	
0.1 FC	BLUE	

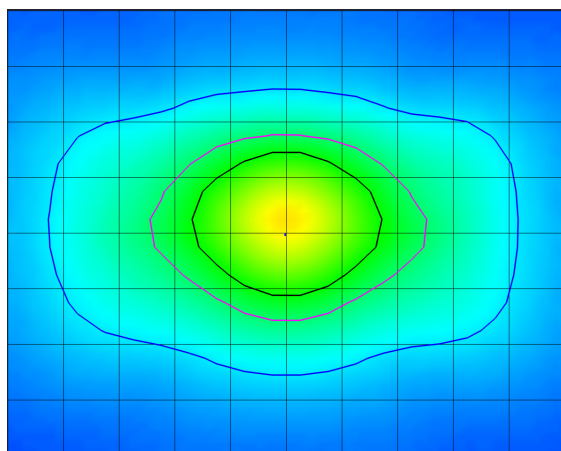
* T3 IS DEFAULT LENS W/ LIGHT OUTPUT SET TO 80%

ILLUMINANCE (FC)



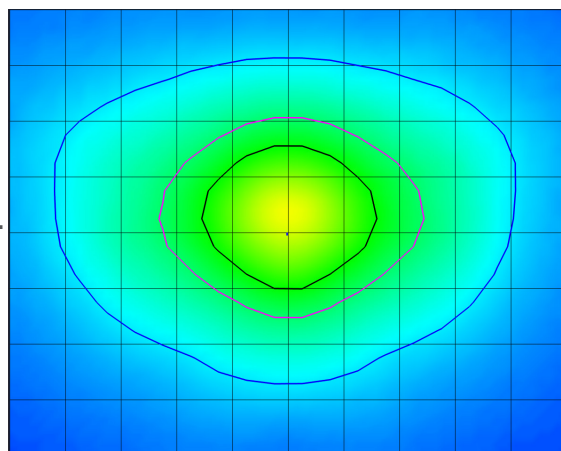
MOUNTING HEIGHT : 25 FT

20FT
↑
↓



TYPE 2 OPTICS
SL-AL1-LENS-T2

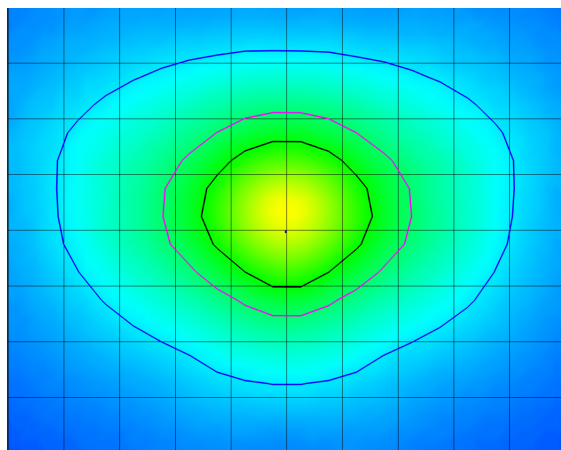
160FT
↑
↓



TYPE 3 OPTICS*
SL-SAL-100L-T3

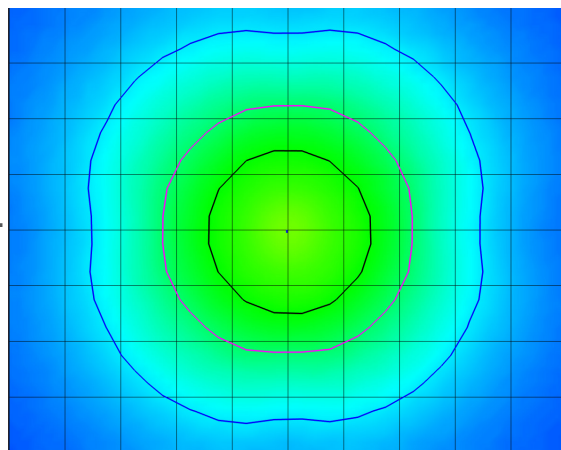
MOUNTING HEIGHT : 25 FT

20FT
↑
↓



TYPE 4 OPTICS
SL-AL1-LENS-T4

160FT
↑
↓



TYPE 5 OPTICS
SL-AL1-LENS-T5

Light Efficient Design

847.380.3540 • led-llc.com • sales@led-llc.com