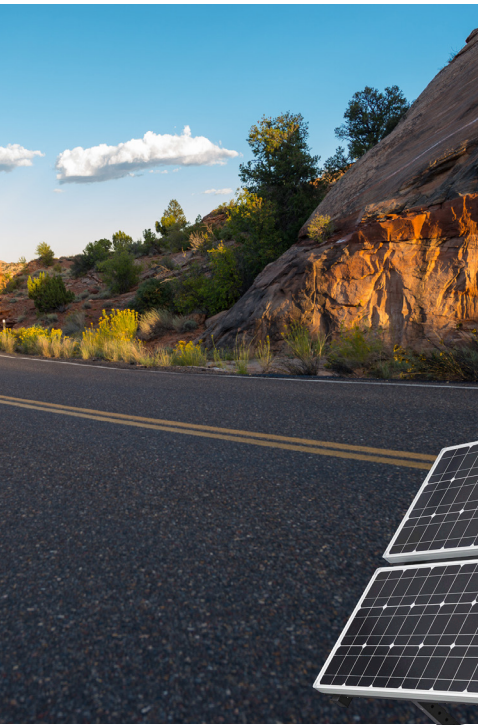




## 50W SOLAR AREA LIGHT | OFF-GRID



**HID EQUIVALENCES UP TO 400W & FULLY POWERED BY THE SUN — NO TRENCHING OR WIRING REQUIRED.** Solera Solar Lighting 50W Off-Grid Area Light can be use completely off-grid. High-performance solar controller maximizes solar charge under all conditions.

- Exclusive long-lasting battery withstands extreme temperatures
- Easy to install and operate
- Adjustable solar panel — can be mounted up to 16 FT away from light engine
- Custom optics and CCT options available
- Advanced new LiFePO4 battery will last at least 2,000 charge cycles

**EASY TO  
INSTALL**

**FOR POLE MOUNTING, 4 U-BOLTS ARE  
REQUIRED (U-BOLTS NOT INCLUDED)**



CERTIFIED BATTERY



BATTERY  
CHARGE TIME



BATTERY LIFE



BATTERY  
CHARGE TEMP



-40°F TO 140°F  
OPERATING TEMP



REPLACEABLE  
BATTERY



MOTION  
SENSING



100,000hrs  
RATED LIFE

PART #	UPC	COMPARES TO	LUMENS	CCT	EPA	DIMENSIONS	LISTINGS
SL-SAL-OG-50W-50K-SF-BK-G2	844006081423	400W HID	9800	5000K	6.1	11.2" x 7.0" x 16.3" (FIXTURE) 31.8" x 31.5" (SOLAR PANEL)	CE FC
BRACKET & ADDITIONAL SOLAR PANEL						OPERATING MODES	
SL-SAL-50W-2PANELKIT*	(2) 50W SOLAR PANELS, 10 FT EXTENSION CABLE, 6 FT Y-CABLE, ADJUSTABLE BRACKET					TIMER   MOTION SENSING	

\*MUST ORDER SL-SAL-50W-2PANELKIT SEPARATELY (SHIPPED IN A SEPARATE BOX)

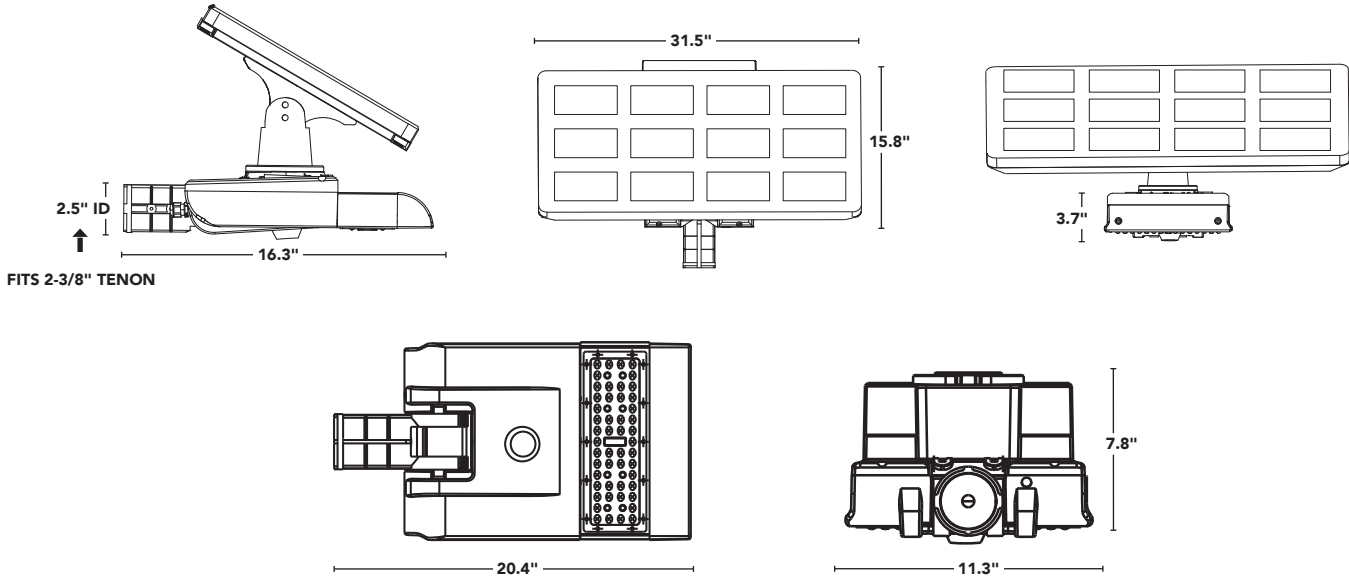
**FOR LISTING STATUS GO TO LED-LLC.COM**

### Light Efficient Design

847.380.3540 • led-llc.com • sales@led-llc.com



**solera-solar.com**



## ACCESSORIES

### BRACKETS

PART #	DESCRIPTION
SL-SAL-BKT-RP-BK-G1	ROUND POLE BRACKET
SL-SAL-BKT-SP-BK-G1	SQUARE POLE BRACKET
SL-SAL-BKT-ST-3-BK-G1	TENON ADAPTER FOR 3" SQUARE POLE
SL-SAL-BKT-RT-3-BK-G1	TENON ADAPTER FOR 3" ROUND POLE
SL-SAL-BKT-WM-BK-G1	WALL MOUNT BRACKET
SL-BKT-KIT-099	TENON MOUNTING KIT FOR SOLAR PANELS

STANDARD SLIP FITTER MOUNTING BRACKET INCLUDED.

CONTACT US FOR ADDITIONAL BRACKET OPTIONS.

### OPTIONAL MOUNTING HARDWARE (NOT INCLUDED)

PART #	DESCRIPTION	QTY REQ.
SL-UBOLT-4IN-ROUND	FITS 4" ROUND POLE	4 U-BOLTS
SL-UBOLT-4IN-SQUARE	FITS 4" SQUARE POLE	
SL-UBOLT-5IN-ROUND	FITS 5" ROUND POLE	
SL-UBOLT-5IN-SQUARE	FITS 5" SQUARE POLE	




## FOR USE W/ SL-SAL OFF-GRID + HYBRID MODELS



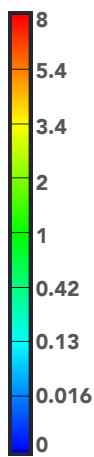
## Light Efficient Design

847.380.3540 • led-llc.com • sales@led-llc.com

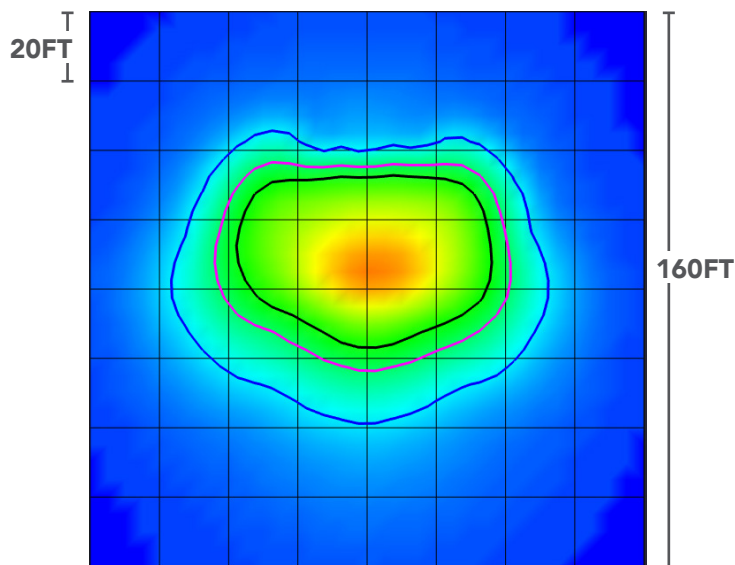
## PHOTOMETRICS

FOOT CANDLES	ISO-LINE COLOR	
1 FC	BLACK	
0.5 FC	MAGENTA	
0.1 FC	BLUE	

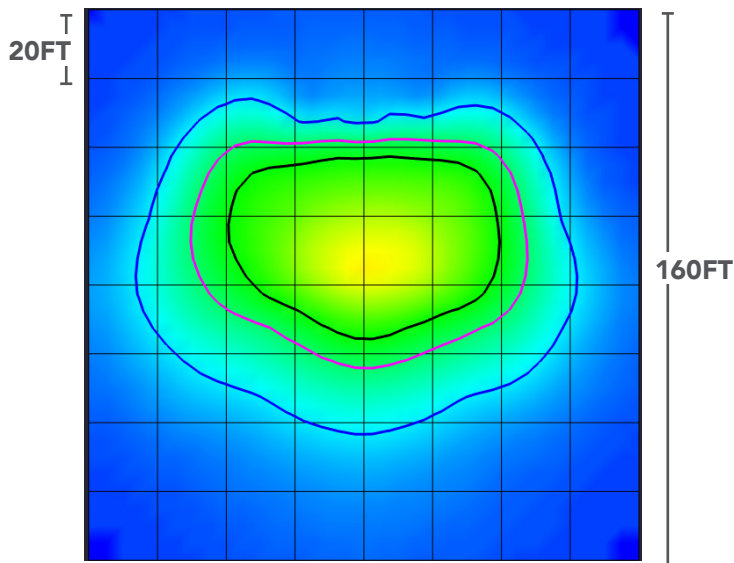
ILLUMINANCE (FC)



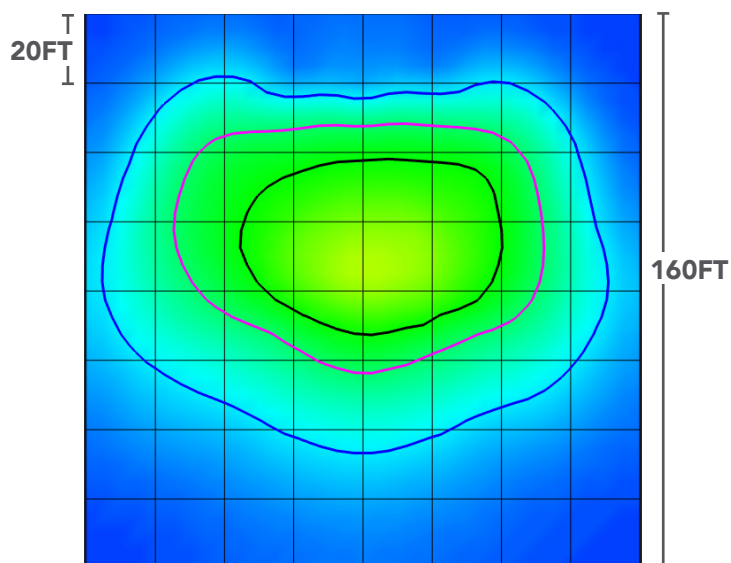
MOUNTING HEIGHT: 20FT



MOUNTING HEIGHT: 25FT



MOUNTING HEIGHT: 30FT



## Light Efficient Design

847.380.3540 • led-llc.com • sales@led-llc.com