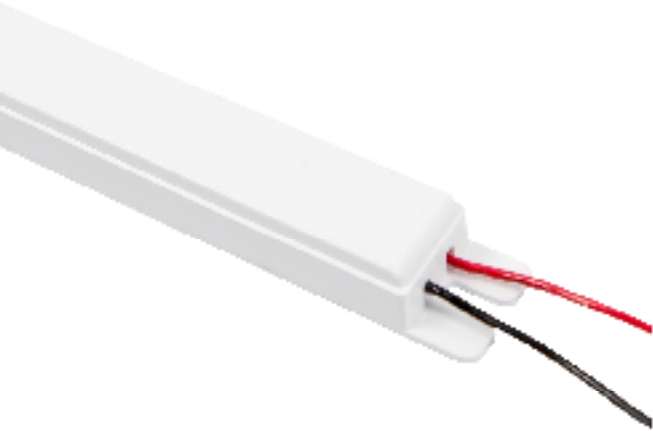


LED DRIVER FOR LEDBARKITJ + EXTDRIVE T5/T8



FEATURES

- Universal AC input / full range
- Built-in active PFC function
- High efficiency up to 90%
- Protections: short circuit / over current / over voltage
- Cooling by free air convection
- Class 2 power unit
- Dimming function 0~10V
- Compliance to worldwide safety regulations for lighting
- Suitable for dry/damp locations
- UL File Number: E360175

SPECIFICATION GUIDE

OUTPUT

MODEL	RPT-TDJ-10W	RPT-TDJ-15W	RPT-TDJ-20W	RPT-TDJ-30W	RPT-TDJ-36W	RPT-TDJ-40W	RPT-TDJ-60W	RPT-TDJ-80W
OUTPUT CHANNEL	1 Channel	1 Channel	1 Channel	1 Channel	1 Channel	1 Channel	1 Channel	1 Channel
RATED CURRENT	300mA	380mA	540mA	700mA	900mA	1000mA	1680mA	2100mA
DC VOLTAGE	36V	40V	40V	40V	40V	40V	28-40V	60V
RATED POWER	10W	13W + 15W	18W + 22W	30W	36W	40W	60W	75W
EFFICIENCY	91%	91%	91%	91%	91%	91%	91%	91%

INPUT

VOLTAGE RANGE	100~277VAC
FREQUENCY RANGE	50~60HZ
POWER FACTOR (TYP)	PF ≥ 0.98/120VAC, PF ≥ 0.90/277VAC (at full load)
AC CURRENT (MAX)	0.80A
LEAKAGE CURRENT	<0.75mA
INRUSH CURRENT (TYP)	20A/277VAC
THD	<20%

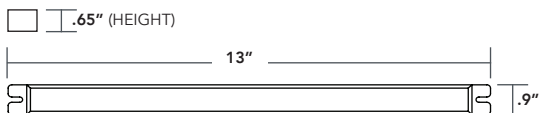
PROTECTION

OVER CURRENT	105~110% Iout Protection type: Constant Current limiting, recovers automatically after fault condition is removed
SHORT CIRCUIT	Hiccup mode, recovers automatically after fault condition is removed
OVER VOLTAGE	105~125% Protection type: Shut down output voltage

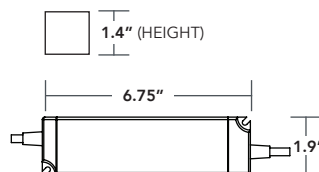
ENVIRONMENT

WORKING TEMP	-20~+40°C
WORKING HUMIDITY	20-95% RH non-condensing
STORAGE TEMP, HUMIDITY	-20~+40°C, 10~95% RH
TEMP COEFFICIENT	0.03%/°C (0~40°C)
VIBRATION	10~500Hz, 2G 12Min / 1cycle, period for 72min each along X, Y, Z axes

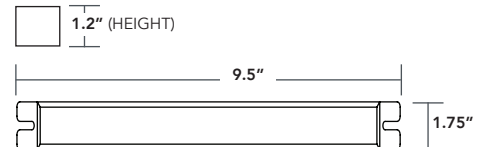
10-30 WATT DRIVER



40-60 WATT DRIVER



80 WATT DRIVER



LIGHT EFFICIENT DESIGN HEADQUARTERS 188 S. Northwest Highway • Cary, IL 60013
 INNOVATION & MANUFACTURING CENTER 30 Log Bridge Road, Building 200 • Middleton, MA 01949
 847.380.3540 • led-llc.com

08.07.20 Information is subject to change without notice.

