

INT DRIVE T5 G3

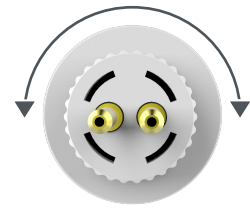
UL TYPE B | >150 LPW | ROTATABLE END CAPS

- PRO
- BASE
- SUPPLY
- CUSTOM

this tube deserves a turn

THE INTDRIVE T5 G3 IS OUR LATEST GENERATION OF LED TUBE WHICH BUILDS ON OUR PREVIOUS G1 MODEL. LINE VOLTAGE, BALLAST BYPASS UL TYPE B INSTALLATION. FINALLY – A UL LISTED, LED TUBE WITH A DIAMETER SIMILAR TO A TRADITIONAL FLUORESCENT T5 TUBE.

the first UL Listed
Type B T5 Tube in
the USA!



SAFETY FIRST

UL 1598C listing. The first UL Listed Type B T5 Tube in the USA!

REDUCES MAINTENANCE COSTS

Designed to bypass existing fluorescent ballast.

ENERGY EFFICIENT

Extremely high efficiency at 150 LPW. For example - replace a traditional 4FT, 54W T5HO fluorescent lamp (59W system wattage including the ballast) with the RemPhos INTDRIVE T5 G3 that uses only 24W.

SLIM PROFILE

3/4" (T6) diameter will fit all existing fixtures designed for T5 fluorescent lamps. Most other UL Type B T5 LED tubes on the market are actually "T8" diameter with T5 pins (the larger diameter may not fit many T5 fixtures). Perfect choice for offices, schools, hospitals, retail stores, libraries, museums and many more applications.

AVAILABLE IN 2FT, 3FT, 4FT & 5FT SIZES

Available in multiple CCTs. Available in standard and HO outputs for the 4ft model only.

END CAPS ROTATE 180°

Perfect for decorative architectural fixtures with angled sockets.

SINGLE SIDED POWER

Uses existing non-shunted sockets.

easy
install



NON SHUNTED

QUALITY CONSTRUCTION

High grade polycarbonate, with aluminum heat sink.

SUITABLE FOR DRY & DAMP LOCATIONS

5 YEAR STANDARD WARRANTY, L70 >100,000HRS

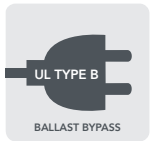
07.07.22 Information is subject to change without notice.

RemPhos • 877.997.3674 • www.remphos.com
30 Log Bridge Road • Building 200 • Middleton, MA 01949 • USA

RemPhos
lighting on target

INT DRIVE T5 G3 UL TYPE B | >150 LPW | ROTATABLE END CAPS

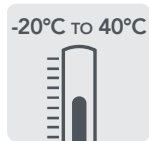
- PRO
- BASE
- SUPPLY
- CUSTOM



INSTALL METHOD



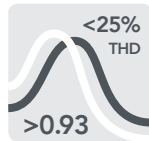
EFFICACY



OPERATING TEMP



LENS



PWR FACTOR/THD



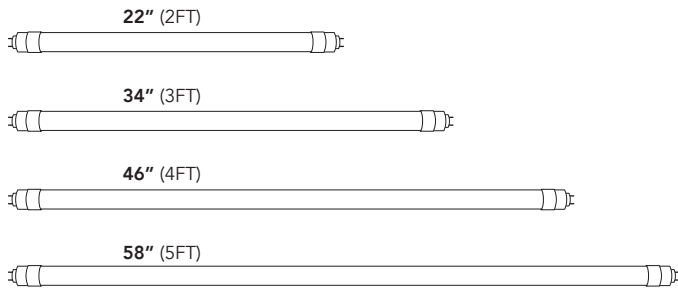
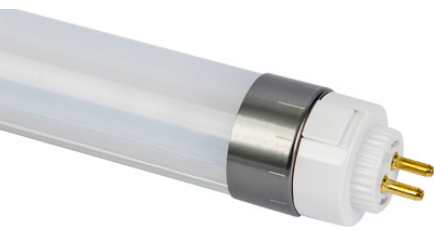
CRI



BEAM ANGLE



RATED LIFE



.87" DIAMETER T6



G5 Bi-Pin



SAFETY FIRST - UL LISTED

REDUCES MAINTENANCE COSTS - NO BALLAST

ENERGY EFFICIENT - OVER 150LPW

SUITABLE FOR DRY & DAMP LOCATIONS

SLIM PROFILE (6/8")

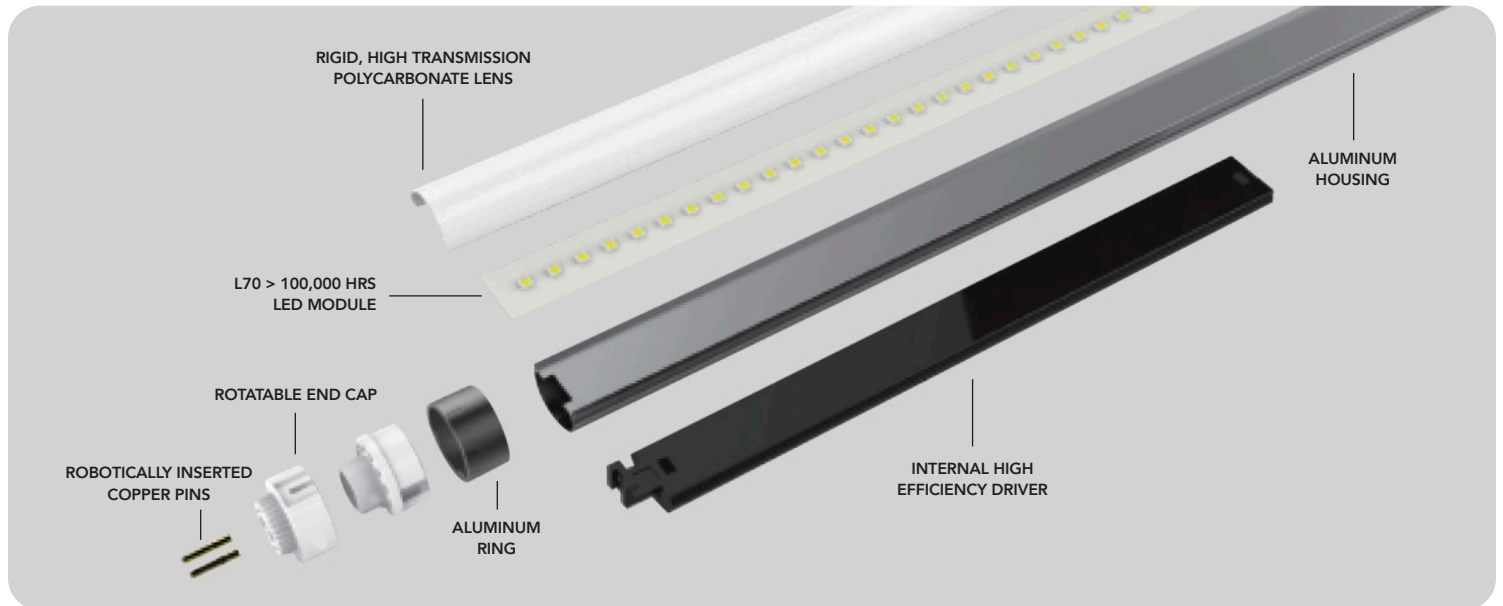
END CAPS ROTATE 180°

SINGLE SIDED POWER (USE NON-SHUNTED SOCKETS)

AVAILABLE IN 2FT, 3FT, 4FT & 5FT SIZES

QUALITY CONSTRUCTION

5 YEAR STANDARD WARRANTY, L70 >100,000HRS



07.07.22 Information is subject to change without notice.

RemPhos • 877.997.3674 • www.remphos.com
30 Log Bridge Road • Building 200 • Middleton, MA 01949 • USA

RemPhos
lighting on target

INT DRIVE T5 G3 UL TYPE B | >150 LPW | ROTATABLE END CAPS

-  PRO
-  BASE
-  SUPPLY
-  CUSTOM

PART NUMBER BUILDER

MFR	FAMILY	PRODUCT	GEN	SIZE	COLOR	VERSION	BAA
RPT	B	INTDRIVE-T5	G3			A	

2FT 835=3500K/85CRI
 3FT 840=4000K/85CRI
 4FT 850=5000K/85CRI
 4FTHO
 5FT

BLANK=NON-BAA
 (NO BAA AVAILABLE AT
 THIS TIME)

ORDERING EXAMPLE

RPT-B-INTDRIVE-T5-G3-2FT-835-A

ORDERING GUIDE

CASE QTY	ENERGY STAR	PART #	LUMEN OUTPUT (LM)	WATTAGE (W)	VOLTAGE RANGE (VAC)	WARRANTY (YRS)	TRADITIONAL EQUIVALENT
50		RPT-B-INTDRIVE-T5-G3-2FT-8XX-A	1350	9	120-277	5	24W T5 FL
50		RPT-B-INTDRIVE-T5-G3-3FT-8XX-A	1500	10	120-277	5	39W T5 FL
50		RPT-B-INTDRIVE-T5-G3-4FT-8XX-A	1800	12	120-277	5	HE/28W T5 FL
50		RPT-B-INTDRIVE-T5-G3-4FTHO-8XX-A	3600	24	120-277	5	HO/54W T5 FL
50		RPT-B-INTDRIVE-T5-G3-5FT-8XX-A	3600	24	120-277	5	65W T5 FL

ACCESSORIES

PART #	DESCRIPTION	INPUT VOLTAGE (V AC)	FLUX OUTPUT (LM)	EST. EMG. RUN TIME (MIN)
RPT-ACCESSORY-EMGKIT-HS1-500LM	UL Classified Emergency Kit	120-277	500	145
RPT-ACCESSORY-EMGKIT-HS1-1000LM	UL Classified Emergency Kit	120-277	1000	145

DIMMING AND EMERGENCY OPERATION GUIDE

	UL TYPE B
DIMMABILITY	NO
EMERGENCY OPERATION	YES (see accessories above for EMG Kit)

07.07.22 Information is subject to change without notice.

RemPhos • 877.997.3674 • www.remphos.com
 30 Log Bridge Road • Building 200 • Middleton, MA 01949 • USA

RemPhos
 lighting on target