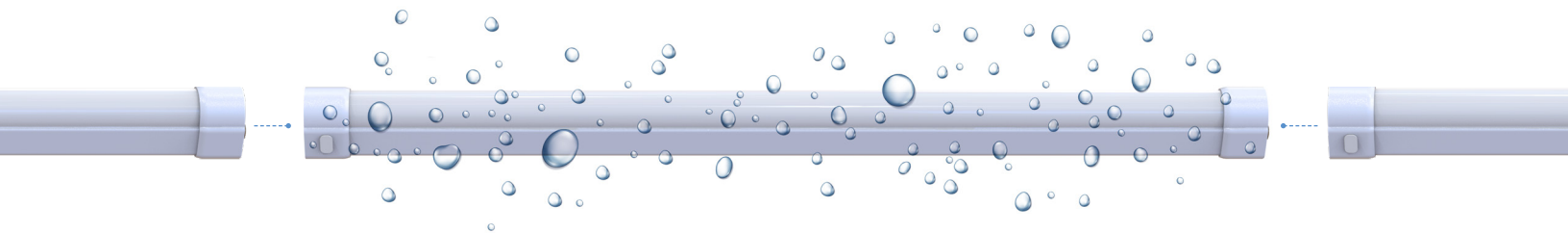




IP65
RATED

NSF

IK08
RATED



THE LBI 65 IS A VAPOR-TIGHT, IP65-RATED LINKABLE FIXTURE OR RETROFIT KIT. Liquid-tight end caps and waterproof linking — connect up to 40 bars.* Great for parking garages, outdoor canopies, tunnels, walkways and more. Efficacy of 160 lumens per watt and a choice between **SIMPLE** or **NETWORK LIGHTING CONTROL** systems.

SUPERFLEX SWITCH BETWEEN 4 WATTAGES & 6 CCTS

									>100,000hrs Rated Life icon"/>
YEAR 7 WARRANTY	120- 277V	0-10V DIM TO OFF	12V AUX OUTPUT	EFFICACY (LIGHT ENGINE) 160 LPW	WHITE TUNING	CRI 80+	BEAM ANGLE 120°	OPERATING TEMP -22°F TO 122°F	>100,000hrs RATED LIFE (CALCULATED)

PART #	DESCRIPTION	SYSTEM LUMENS	LENGTH	WATTAGE	CCT
RP-LBI65-4F-25W-40K-WC-VT	4 FT VAPOR-TIGHT BAR	1920-4000	4 FT	FLEXWATT 10W/15W 20W/25W	FLEXCOLOR 2700K/3000K 3500K/4000K 5000K/5700K
RP-LBI65-4F-25W-40K-WC-OCC-VT	4 FT VAPOR-TIGHT BAR W/ PIR SENSOR				
RP-LBI65-4F-25W-40K-WC-OCCBT-VT	4 FT VAPOR-TIGHT BAR W/ BLUETOOTH PIR SENSOR				
RP-LBI65-8F-50W-40K-WC-VT	8 FT VAPOR-TIGHT BAR	3840-8000	8 FT	FLEXWATT 20W/30W 40W/50W	
RP-LBI65-8F-50W-40K-WC-OCC-VT	8 FT VAPOR-TIGHT BAR W/ PIR SENSOR				
RP-LBI65-8F-50W-40K-WC-OCCBT-VT	8 FT VAPOR-TIGHT BAR W/ BLUETOOTH PIR SENSOR				



* CONNECT UP TO 33 4 FT UNITS TOGETHER @ 120VAC OR 40 4 FT UNITS @ 277VAC.



RP-LBI65-4FT-25W-40K-WC-VT / 4 FT VAPOR-TIGHT BAR



PART INCLUDED	DESCRIPTION	QTY
1 RP-LBI65-4F-25W-40K-WC	4 FT IP65 RATED LIGHT BAR	1
2 RP-LBI-SSC-CCTDIM	SEAMLESS CONNECTOR W/ CCT	1
3 RP-LBI65-IPC-12NPT-3FT	INCOMING POWER CONDUIT ADAPTER	1

RP-LBI65-4FT-25W-40K-WC-OCC-VT / 4 FT VAPOR-TIGHT BAR W/ PIR SENSOR



PART INCLUDED	DESCRIPTION	QTY
1 RP-LBI65-4F-25W-40K-WC	4 FT IP65 RATED LIGHT BAR	1
2 RP-LBI-SSC-CCTDIM	SEAMLESS CONNECTOR W/ CCT	2
3 RP-LBI65-IPC-12NPT-3FT	INCOMING POWER CONDUIT ADAPTER	1
4 RP-LBI65-PIR-A	IP65 IN-LINE PASSIVE INFRARED OCCUPANCY SENSOR	1

RP-LBI65-4FT-25W-40K-WC-OCCBT-VT / 4 FT VAPOR-TIGHT BAR W/ BLUETOOTH PIR SENSOR



PART INCLUDED	DESCRIPTION	QTY
1 RP-LBI65-4F-25W-40K-WC	4 FT IP65 RATED LIGHT BAR	1
2 RP-LBI-SSC-CCTDIM	SEAMLESS CONNECTOR W/ CCT	2
3 RP-LBI65-IPC-12NPT-3FT	INCOMING POWER CONDUIT ADAPTER	1
4 RP-LBI65-BLE-PIR-A	IP65 IN-LINE SILVAIR-READY BLUETOOTH CONTROL NODE W/ PASSIVE INFRARED OCCUPANCY SENSOR	1

BUNDLE INCLUDED HARDWARE

REMOTE CONTROLLER
(1 PER KIT)

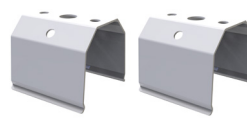


STAINLESS STEEL,
SELF-TAPPING SCREWS



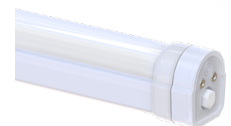
BUNDLE 1 (4) BUNDLE 2 & 3 (6)

MOUNTING BRACKETS
(90° AND 45° MOUNTING)



BUNDLE 1 (2) BUNDLE 2 & 3 (3)

EACH BAR AND SENSOR SHIPS W/ A
WATERPROOF END CAP INSTALLED
1-WAY MOISTURE VALVE





RP-LBI65-8FT-50W-40K-WC-VT / 8 FT VAPOR-TIGHT BAR



PART INCLUDED	DESCRIPTION	QTY
1 RP-LBI65-4F-25W-40K-WC	4 FT IP65 RATED LIGHT BAR	2
2 RP-LBI-SSC-CCTDIM	SEAMLESS CONNECTOR W/ CCT	2
3 RP-LBI65-IPC-12NPT-3FT	INCOMING POWER CONDUIT ADAPTER	1

RP-LBI65-8FT-50W-40K-WC-OCC-VT / 8 FT VAPOR-TIGHT BAR W/ PIR SENSOR



PART INCLUDED	DESCRIPTION	QTY
1 RP-LBI65-4F-25W-40K-WC	4 FT IP65 RATED LIGHT BAR	2
2 RP-LBI-SSC-CCTDIM	SEAMLESS CONNECTOR W/ CCT	3
3 RP-LBI65-IPC-12NPT-3FT	INCOMING POWER CONDUIT ADAPTER	1
4 RP-LBI65-PIR-A	IP65 IN-LINE PASSIVE INFRARED OCCUPANCY SENSOR	1

RP-LBI65-8FT-50W-40K-WC-OCCBT-VT / 8 FT VAPOR-TIGHT BAR W/ BLUETOOTH PIR SENSOR



PART INCLUDED	DESCRIPTION	QTY
1 RP-LBI65-4F-25W-40K-WC	4 FT IP65 RATED LIGHT BAR	2
2 RP-LBI-SSC-CCTDIM	SEAMLESS CONNECTOR W/ CCT	3
3 RP-LBI65-IPC-12NPT-3FT	INCOMING POWER CONDUIT ADAPTER	1
4 RP-LBI65-BLE-PIR-A	IP65 IN-LINE SILVAIR-READY BLUETOOTH CONTROL NODE W/ PASSIVE INFRARED OCCUPANCY SENSOR	1

BUNDLE INCLUDED HARDWARE

REMOTE CONTROLLER
(1 PER KIT)



STAINLESS STEEL,
SELF-TAPPING SCREWS



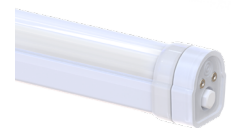
BUNDLE 4 (8) BUNDLE 5 & 6 (10)

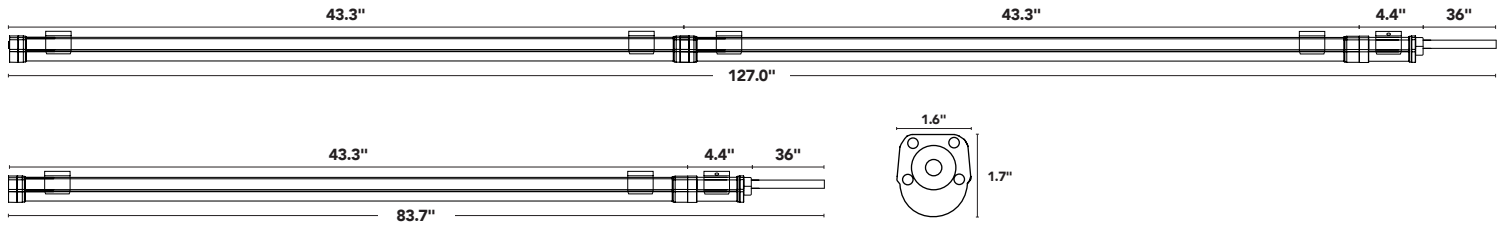
MOUNTING BRACKETS
(90° AND 45° MOUNTING)



BUNDLE 4 (4) BUNDLE 5 & 6 (5)

EACH BAR AND SENSOR SHIPS W/ A
WATERPROOF END CAP INSTALLED
1-WAY MOISTURE VALVE





CONTROL OPTIONS

SIMPLE LIGHTING CONTROL



RP-LBI65-PIR-A
IP65 IN-LINE PASSIVE
INFRARED OCCUPANCY SENSOR
IR11 REMOTE*

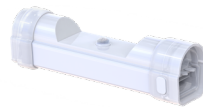


TO CUSTOMIZE DEFAULT SETTINGS, IR11 REMOTE MUST BE ORDERED SEPARATELY

NETWORK LIGHTING CONTROLS



RP-LBI65-BLE-PIR-A
IP65 IN-LINE SILVAIR-READY BLUETOOTH CONTROL
NODE W/ PASSIVE INFRARED OCCUPANCY SENSOR



RP-LBI65-BLE-A
IP65 IN-LINE SILVAIR-READY
BLUETOOTH CONTROL NODE



SIMPLE AND NETWORK LIGHTING CONTROL INCLUDED HARDWARE

2 SEAMLESS CONNECTORS



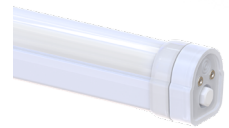
2 STAINLESS STEEL,
SELF-TAPPING SCREWS



1 MOUNTING BRACKET
(90° AND 45° MOUNTING)



SHIPS W/ A WATERPROOF END CAP
INSTALLED 1-WAY MOISTURE VALVE





LINEAR AMBIENT (DIRECT LINEAR AMBIENT LUMINAIRES)

PART #	DLC CODE	DLC	# OF BARS	WATTAGE / BAR	MOUNTING CONFIGURATION	TOTAL WATTAGE	TOTAL LUMENS
RP-LBI65-4F-10W-YYK-[WC;C]-[OCC;OCBT;OCGBT;BT;BTX;blank]-[HV;blank]	S-RXRTRCH	●	1	10	SINGLE	10	1505
RP-LBI65-4F-10W-YYK-[WC;C]-[OCC;OCBT;OCGBT;BT;BTX;blank]-[HV;blank]-2L	S-0ZLS7Z	●	2	10	LINEAR	20	3010
RP-LBI65-4F-10W-YYK-[WC;C]-[OCC;OCBT;OCGBT;BT;BTX;blank]-[HV;blank]-2X	S-ZPP4K8	●	2	10	PARALLEL	20	2990
RP-LBI65-4F-10W-YYK-[WC;C]-[OCC;OCBT;OCGBT;BT;BTX;blank]-[HV;blank]-3X	S-QXLY7T	●	3	10	PARALLEL	30	4461
RP-LBI65-4F-15W-YYK-[WC;C]-[OCC;OCBT;OCGBT;BT;BTX;blank]-[HV;blank]	S-N32WYB	●	1	15	SINGLE	15	2258
RP-LBI65-4F-15W-YYK-[WC;C]-[OCC;OCBT;OCGBT;BT;BTX;blank]-[HV;blank]-2L	S-GSNMFH	●	2	15	LINEAR	30	4515
RP-LBI65-4F-15W-YYK-[WC;C]-[OCC;OCBT;OCGBT;BT;BTX;blank]-[HV;blank]-2X	S-SH2TVJ	●	2	15	PARALLEL	30	4485
RP-LBI65-4F-15W-YYK-[WC;C]-[OCC;OCBT;OCGBT;BT;BTX;blank]-[HV;blank]-3X	S-SMFZB6	●	3	15	PARALLEL	45	6692
RP-LBI65-4F-20W-YYK-[WC;C]-[OCC;OCBT;OCGBT;BT;BTX;blank]-[HV;blank]	S-ZC55PZ	●	1	20	SINGLE	20	3010
RP-LBI65-4F-20W-YYK-[WC;C]-[OCC;OCBT;OCGBT;BT;BTX;blank]-[HV;blank]-2L	S-7192HT	●	2	20	LINEAR	4	6020
RP-LBI65-4F-20W-YYK-[WC;C]-[OCC;OCBT;OCGBT;BT;BTX;blank]-[HV;blank]-2X	S-5RY6B2	●	2	20	PARALLEL	40	5980
RP-LBI65-4F-20W-YYK-[WC;C]-[OCC;OCBT;OCGBT;BT;BTX;blank]-[HV;blank]-3X	S-9Y0WS3	●	3	20	PARALLEL	60	8922
RP-LBI65-4F-25W-YYK-[WC;C]-[OCC;OCBT;OCGBT;BT;BTX;blank]-[HV;blank]	S-H3PQMB	●	1	25	SINGLE	25	3824
RP-LBI65-4F-25W-YYK-[WC;C]-[OCC;OCBT;OCGBT;BT;BTX;blank]-[HV;blank]-2L	S-8ZM6JW	●	2	25	LINEAR	50	7649
RP-LBI65-4F-25W-YYK-[WC;C]-[OCC;OCBT;OCGBT;BT;BTX;blank]-[HV;blank]-2X	S-82XD8K	●	2	25	PARALLEL	50	7606
RP-LBI65-4F-25W-YYK-[WC;C]-[OCC;OCBT;OCGBT;BT;BTX;blank]-[HV;blank]-3X	S-9TDQW2	●	3	25	PARALLEL	75	11324

LOW OUPUT (STAIRWELL AND PASSAGEWAY LUMINAIRES)

PART #	DLC CODE	DLC	# OF BARS	WATTAGE / BAR	MOUNTING CONFIGURATION	TOTAL WATTAGE	TOTAL LUMENS
RP-LBI65-4F-10W-YYK-[WC;C]-[OCC;OCBT;OCGBT;BT;BTX;blank]-[HV;blank]	S-61RZ44	●	1	10	SINGLE	10	1505
RP-LBI65-4F-15W-YYK-[WC;C]-[OCC;OCBT;OCGBT;BT;BTX;blank]-[HV;blank]	S-ZT7M4L	●	1	15	SINGLE	15	2258
RP-LBI65-4F-20W-YYK-[WC;C]-[OCC;OCBT;OCGBT;BT;BTX;blank]-[HV;blank]	S-YZ5CX4	●	1	20	SINGLE	20	3010
RP-LBI65-4F-25W-YYK-[WC;C]-[OCC;OCBT;OCGBT;BT;BTX;blank]-[HV;blank]	S-V49614	●	1	25	SINGLE	25	3824

● STANDARD ● PREMIUM FAMILY CODE: MMMTNV

TESTED AT 2700K

MID OUPUT (STAIRWELL AND PASSAGEWAY LUMINAIRES)

PART #	DLC CODE	DLC	# OF BARS	WATTAGE / BAR	MOUNTING CONFIGURATION	TOTAL WATTAGE	TOTAL LUMENS
RP-LBI65-4F-10W-YYK-[WC;C]-[OCC;OCBT;OCGBT;BT;BTX;blank]-[HV;blank]-2L	S-CTG99H	●	2	10	LINEAR	20	3010
RP-LBI65-4F-10W-YYK-[WC;C]-[OCC;OCBT;OCGBT;BT;BTX;blank]-[HV;blank]-2X	S-N0ZMZH	●	2	10	PARALLEL	20	2990
RP-LBI65-4F-15W-YYK-[WC;C]-[OCC;OCBT;OCGBT;BT;BTX;blank]-[HV;blank]-2L	S-F3NZLM	●	2	15	LINEAR	30	4515
RP-LBI65-4F-15W-YYK-[WC;C]-[OCC;OCBT;OCGBT;BT;BTX;blank]-[HV;blank]-2X	S-ZQ0FCF	●	2	15	PARALLEL	30	4485
RP-LBI65-4F-20W-YYK-[WC;C]-[OCC;OCBT;OCGBT;BT;BTX;blank]-[HV;blank]-2L	S-Y8LMBP	●	2	20	LINEAR	40	6020
RP-LBI65-4F-20W-YYK-[WC;C]-[OCC;OCBT;OCGBT;BT;BTX;blank]-[HV;blank]-2X	S-FXJHP9	●	2	20	PARALLEL	40	5980
RP-LBI65-4F-25W-YYK-[WC;C]-[OCC;OCBT;OCGBT;BT;BTX;blank]-[HV;blank]-2L	S-8M07FR	●	2	25	LINEAR	50	7649
RP-LBI65-4F-25W-YYK-[WC;C]-[OCC;OCBT;OCGBT;BT;BTX;blank]-[HV;blank]-2X	S-158JD4	●	2	25	PARALLEL	50	7606

HIGH OUPUT (STAIRWELL AND PASSAGEWAY LUMINAIRES)

PART #	DLC CODE	DLC	# OF BARS	WATTAGE / BAR	MOUNTING CONFIGURATION	TOTAL WATTAGE	TOTAL LUMENS
RP-LBI65-4F-10W-YYK-[WC;C]-[OCC;OCBT;OCGBT;BT;BTX;blank]-[HV;blank]-3X	S-4HGKGJ	●	3	10	PARALLEL	30	4461
RP-LBI65-4F-15W-YYK-[WC;C]-[OCC;OCBT;OCGBT;BT;BTX;blank]-[HV;blank]-3X	S-F9K7VC	●	3	15	PARALLEL	45	6692
RP-LBI65-4F-20W-YYK-[WC;C]-[OCC;OCBT;OCGBT;BT;BTX;blank]-[HV;blank]-3X	S-JQ7J8T	●	3	20	PARALLEL	60	8922
RP-LBI65-4F-25W-YYK-[WC;C]-[OCC;OCBT;OCGBT;BT;BTX;blank]-[HV;blank]-3X	S-DBY3BF	●	3	25	PARALLEL	75	11324

● STANDARD ● PREMIUM FAMILY CODE: MMMTNV

TESTED AT 2700K



CABLES + CONNECTORS

PART #				DESCRIPTION
6IN	12IN	24IN	48IN	LINKING CABLES
RP-LBI65-LC-6IN-DIM	RP-LBI65-LC-12IN-DIM	RP-LBI65-LC-24IN-DIM	RP-LBI65-LC-48IN-DIM	

PART #	DESCRIPTION	
RP-LBI65-IP-3FT	3 FT INCOMING POWER CABLE WIRE WHIP	
RP-LBI-SSC-DIM-10P RP-LBI-SSC-NODIM-10P	SEAMLESS CONNECTOR AVAILABLE FOR DIMMING (INCLUDES CCT) AND NON-DIMMING (DOES NOT INCLUDE CCT) APPLICATIONS	
RP-LBI65-IPC-12NPT-3FT	INCOMING POWER CONDUIT ADAPTER USED W/ CONDUIT TO HARDWIRE THE INCOMING POWER CABLE INTO FIXTURE OR JUNCTION BOX (3 FT OF WIRE INPUT INCLUDED)	
RP-LBI65-SPND-SS-10FT (1 PACK) RP-LBI65-SPND-SS-10FT-2P (2 PACK)	STAINLESS STEEL, WATERPROOF AIRCRAFT SUSPENSION CABLE	
RP-LBI65-EMG-40W	RP-LBI65-EMG-40W THE STREAMER STB27FC(A)-40WL LED EMERGENCY DRIVER IS UL LISTED FOR WET LOCATIONS. IT ALLOWS THE SAME LED LUMINAIRE TO BE USED FOR NORMAL AND EMERGENCY OPERATION, AND WORKS IN CONJUNCTION WITH AN AC LED DRIVER THAT CONVERTS NEW OR EXISTING LED FIXTURES INTO EMERGENCY LIGHTING. IT INCLUDES A WATERPROOF AND INDEPENDENT BATTERY PACK THAT CAN BE EASILY REPLACED BY HAND, AND FEATURES A STATUS SCREEN TO SHOW CHARGING, DISCHARGING, AND FAILURE.	

LINKING QUANTITY

	120V	208V	240V	277V
4FT	30 BARS	40 BARS	40 BARS	40 BARS
3FT	40 BARS	40 BARS	40 BARS	40 BARS
2FT	40 BARS	40 BARS	40 BARS	40 BARS

LINKING POSSIBILITIES

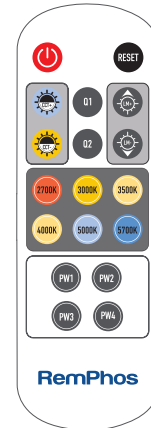
- Linking cables will lower connectable quantities.
- The linking numbers are based on using the LBI 65 conduit adapter and connected end to end.
- If incoming power cables are used when powered on 120VAC, linking number is reduced to 24pcs.
- Linking does not include 0-10V linked control. This will depend on the controlling device.



24 SKUs in 1 WITH FLEXWATT™ & FLEXCOLOR™ TECHNOLOGY (CONTROLLABLE FROM REMOTE)



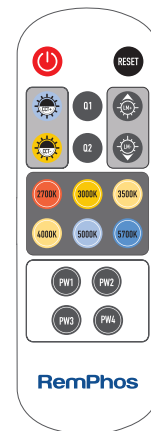
	PW1	PW2	PW3	PW4
2FT	4W	6W	9W	12W
3FT	6W	10W	15W	20W
4FT	10W	15W	20W	25W



- Eliminate ordering and stocking multiple wattages and color temperatures. Product offers 24 SKUs in 1 unit which can easily be configured to 4 different wattage packages and 6 different CCTs.



2700K 2700°K WARM	4000K 4000°K NEUTRAL
3000K 3000°K WARM	5000K 5000°K COOL
3500K 3500°K NEUTRAL	5700K 5700°K COOL



- Product ships at a default color temp (K) and wattage setting (install as is, or tailor the settings to fit your needs).
- Save on labor costs by having us factory pre-set the wattage and color temperature (possible upcharge - contact us for more details).

FLEXCONTROL™ TECHNOLOGY

- Order control-ready, simple lighting controls (integrated high/low and daylight sensor), or network lighting controls.
- Optional sensors are directly linkable to the light bars.
- Our basic motion/daylight control (RP-LBI65-PIR-A ordering code) is adjustable via remote control for sensitivity duration of time at high light level before dimming to low duration of time at low light level before turning off. Ramping up and down light levels based on daylight and the dimmed light level %.

SUITABLE FOR WET LOCATIONS

PASS-THROUGH 0-10V DIMMING, AUXILIARY 12V OUTPUT, & COLOR CONTROL CHANNEL

- Allows all light bars to be dimmed & white tuned together as a group.

ADAPTABLE MOUNTING

- Included mounting clips (x2) made from stainless steel, painted white to match fixture. Suspension mounting holes in bracket for 3/8" diameter threaded rod. Included stainless steel, self-drilling screws for surface mounting.



RP-LBI65-EMG-40W

PRODUCT DESCRIPTION

The Streamer STB27FC(A)-40WL LED emergency driver is UL Listed for wet locations. It allows the same LED luminaire to be used for normal and emergency operation, and works in conjunction with an AC LED driver that converts new or existing LED fixtures into emergency lighting. It includes a waterproof and independent battery pack that can be easily replaced by hand, and features a status screen to show charging, discharging, and failure.

OPERATION

When AC power fails, the STREAMER emergency LED driver immediately switches to the emergency mode, operating the LEDs at full lumen output for a minimum of 90 minute (max 40W dimmed load). When AC power is restored, the emergency driver automatically returns to the charging mode.

FEATURES

- UL Listed for wet locations, IP65 Waterproof
- Manual test and remote control test (remote included)
- Over-discharging protection
- Rest mode
- 90 minutes emergency time
- Initial functional self-test
- Includes 6 1/2 NPT threaded openings

CONNECTION QUANTITY

SIZE	UNCONTROLLED	STANDARD/NLC SENSOR
2 FT	16 PIECES	14 PIECES
3 FT	11 PIECES	10 PIECES
4 FT	8 PIECES	7 PIECES

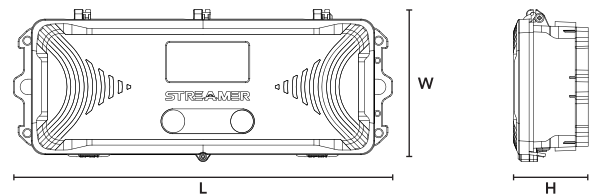
STREAMER STB27FC(A)-40WL UL LISTED LED EMERGENCY DRIVER

0-10V Dimming



DIMENSIONS

MRF MODEL #	L	W	H
STB27FC-40WL-LFPB4S2P-AC	14.37"	5.79"	2.83"



RP-LBI65-EMG-40W

(STB27FC-40WL-LFPB4S2P-AC)

OUTPUT POWER
40 Watts (Max Load)

OUTPUT VOLTAGE
120V AC

INPUT CURRENT
150 mA (Max)

INPUT POWER
8.5 Watts (Max)

INPUT VOLTAGE
120-277VAC, 50-60Hz

EMERGENCY OPERATION
>90 Minutes

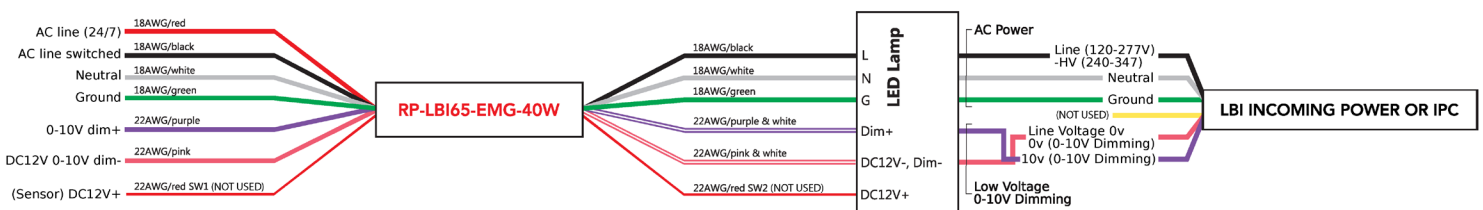
OPERATING TEMP
0° to 60°C

BATTERY
Lithium

RECHARGE
36 HRS

DIMENSIONS
L 14.37" X W 5.79" X H 2.83"

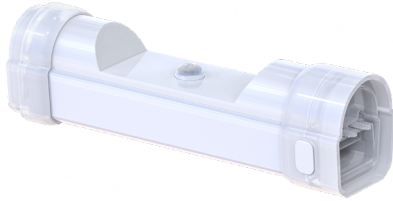
TYPICAL WIRING DIAGRAM





IP65 IN-LINE PASSIVE INFRARED OCCUPANCY SENSOR

ORDERING **RP-LBI65-PIR-A**, IN ADDITION TO THE LBI 65 PART NUMBER, UPGRADES THE FIXTURE W/ A **SIMPLE CONTROL** IN-LINE PASSIVE INFRARED OCCUPANCY SENSOR.



ATTRIBUTES

DETECTION TECHNOLOGY	PASSIVE INFRARED (PIR)
DETECTION TYPE	OCCUPANCY
SENSOR POWER	12VDC
GROUPABLE	NO
NETWORK LIGHTING CONTROL	NO
COMMISSIONING METHOD	IR REMOTE
REMOTE	IR11
DAYLIGHT HARVESTING	YES
HI OR LOW TRIM	NO
BI-LEVEL DIMMING	YES
NETWORK TECHNOLOGY	NONE
INSTALLATION TYPE	INTERNAL
DLC LISTED	YES
CONTROL CAPACITY	15 BARS

IR11 REMOTE



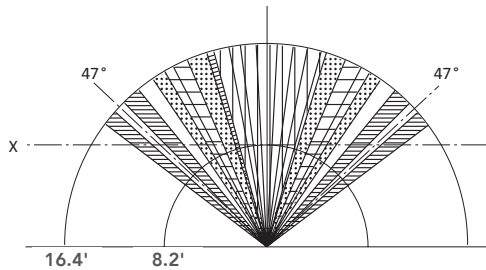
- Permanent ON/OFF Function
- Permanent OFF
- Sensor Mode
- Reset Function
- Disable Daylight Sensor
- Test Mode

FOR MORE INFORMATION ON THE IR11 REMOTE SCAN BELOW

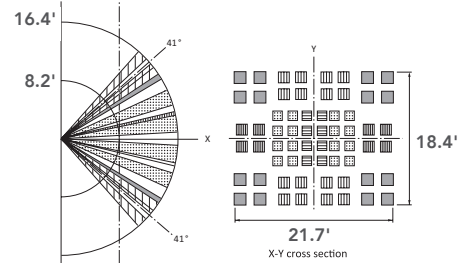


DETECTION PATTERN / RP-LBI65-PIR-A

TOP VIEW



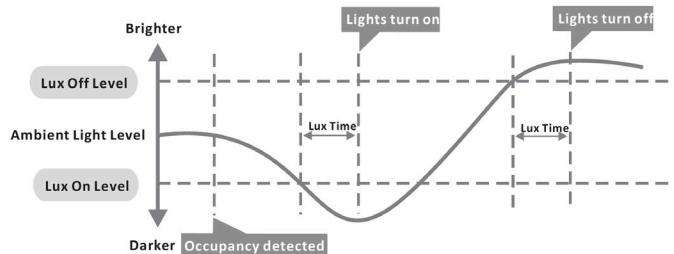
SIDE



DAYLIGHT HARVESTING / RP-LBI65-PIR-A

Sensor detects the difference between natural light and artificial light (lamp) from behind the diffuser, switch on automatically (even w/o movements) when the ambient light is below the target value, and switch off automatically whenever the artificial light is not required (ambient light is bright enough).

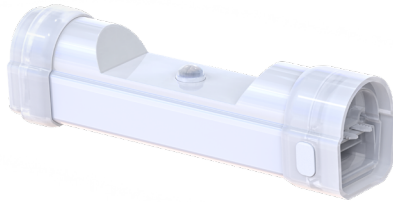
NOTE LUX-OFF SAMPLING TIME - 30S. LUX-ON SAMPLING TIME - 10S. LUX-ON FUNCTION WILL ONLY OPERATE WITHOUT MOTION WHEN STANDBY IS SET TO + ∞.





IP65 IN-LINE SILVAIR-READY BLUETOOTH CONTROL NODE W/ PASSIVE INFRARED OCCUPANCY SENSOR

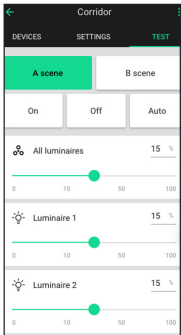
ORDERING **RP-LBI65-BLE-PIR-A**, IN ADDITION TO THE LBI 65 PART NUMBER, UPGRADES THE FIXTURE W/ A FACTORY INSTALLED **NETWORK LIGHTING CONTROL**. ONCE CONNECTED THROUGH THE SILVAIR APP, THE BLUETOOTH MICROWAVE MOTION SENSOR AND DAYLIGHT HARVESTING TECHNOLOGY CAN MAXIMIZE ENERGY SAVINGS.



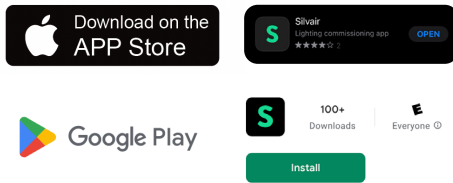
ATTRIBUTES

DETECTION TECHNOLOGY	PASSIVE INFRARED (PIR)
DETECTION TYPE	OCCUPANCY / VACANCY
SENSOR POWER	12VDC
GROUPABLE	YES
NETWORK LIGHTING CONTROL	YES
COMMISSIONING METHOD	SILVAIR APP + IR REMOTE FOR RANGE SETTING
REMOTE	N/A
DAYLIGHT HARVESTING	YES
HI OR LOW TRIM	YES
BI-LEVEL DIMMING	YES
NETWORK TECHNOLOGY	BLUETOOTH
INSTALLATION TYPE	INTERNAL
DLC LISTED	YES + DLC NLC
CONTROL CAPACITY	15 BARS

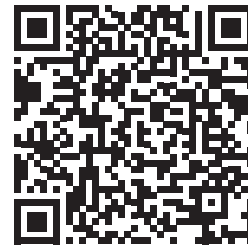
SILVAIR APP



SILVAIR IS A SOFTWARE AND COMMISSIONING APP THAT CONNECTS AND CONTROLS LIGHTING FIXTURES USING BLUETOOTH MESH TECHNOLOGY.

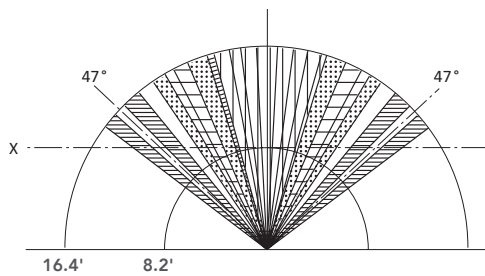


FOR MORE INFORMATION ON THE SILVAIR APP SCAN BELOW

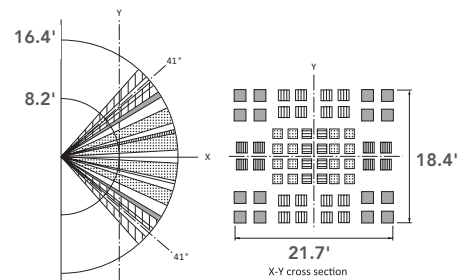


DETECTION PATTERN / RP-LBI-BLE-PIR-A

TOP VIEW



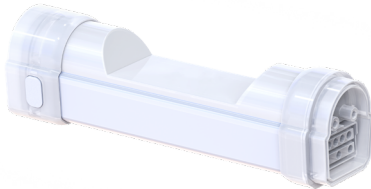
SIDE





IP65 IN-LINE SILVAIR-READY BLUETOOTH CONTROL NODE

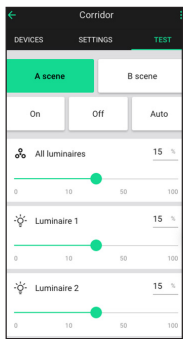
ORDERING **RP-LBI65-BLE-A**, IN ADDITION TO THE LBI 65 PART NUMBER, UPGRADES THE FIXTURE W/ A FACTORY INSTALLED **NETWORK LIGHTING CONTROL**. ONCE CONNECTED THROUGH THE SILVAIR APP, THE BLUETOOTH MICROWAVE MOTION SENSOR AND DAYLIGHT HARVESTING TECHNOLOGY CAN MAXIMIZE ENERGY SAVINGS.



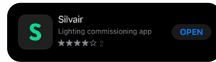
ATTRIBUTES

DETECTION TECHNOLOGY	MICROWAVE
DETECTION TYPE	OCCUPANCY / VACANCY
SENSOR POWER	12VDC
GROUPABLE	YES
NETWORK LIGHTING CONTROL	YES
COMMISSIONING METHOD	SILVAIR APP
REMOTE	N/A
DAYLIGHT HARVESTING	YES
HI OR LOW TRIM	YES
BI-LEVEL DIMMING	YES
NETWORK TECHNOLOGY	BLUETOOTH MESH
INSTALLATION TYPE	INTERNAL
DLC LISTED	YES + DLC NLC
CONTROL CAPACITY	15 BARS

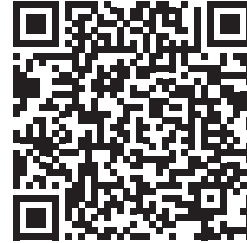
SILVAIR APP



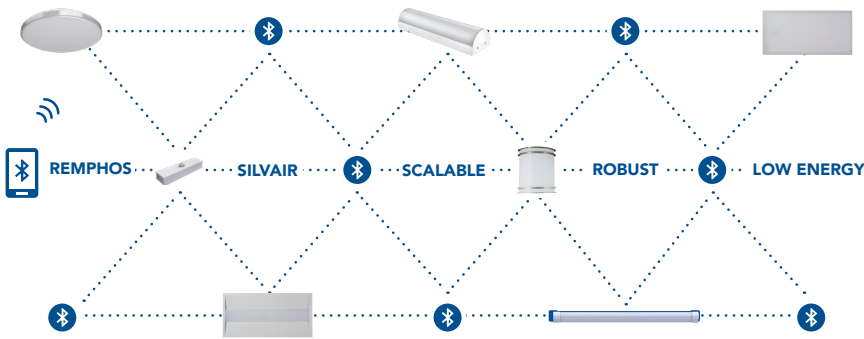
SILVAIR IS A SOFTWARE AND COMMISSIONING APP THAT CONNECTS AND CONTROLS LIGHTING FIXTURES USING BLUETOOTH MESH TECHNOLOGY.



FOR MORE INFORMATION ON THE SILVAIR APP SCAN BELOW



RemPhos® SILVAIR APP + COMMISSIONING OVERVIEW



WHAT IS SILVAIR?

Silvaair is a software and commissioning app that connects and controls lighting fixtures using Bluetooth mesh technology.

HOW DOES IT CONNECT?

Silvaair can be set up in advance through the cloud and the Silvaair portal. It can also be commissioned in the field with the IOS app.

DOWNLOAD SILVAIR APPS



MOBILE APP Apple App Store
or
WEB APP platform.silvaair.com

