

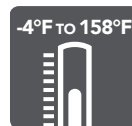
# RP-1STEPDIM\_30-60-100 STEP-DIM MODULE



12V  
DC POWERED



DIMMING

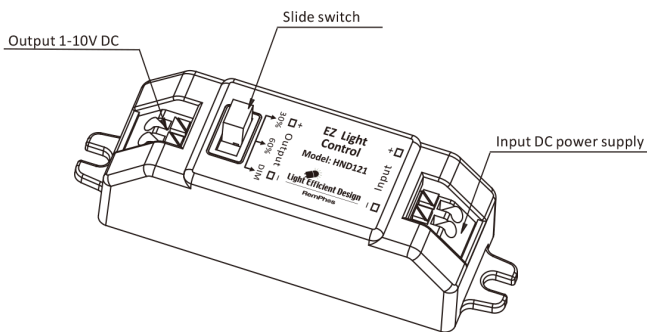


OPERATING TEMP

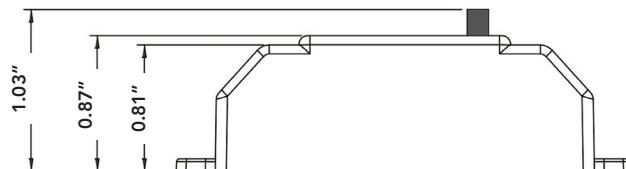
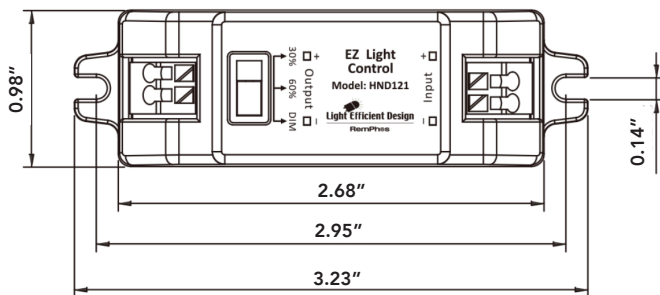
## single switch step-dim module



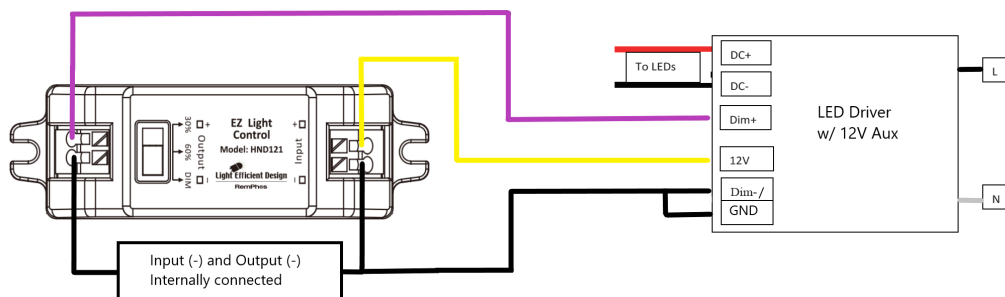
QUICK FLIP SWITCH



- Compatible with 0-10V LED drivers w/ 12v Aux.
- 30% / 60% Setting:  
-Fixture turns on at dim level (30% or 60%)  
-Quick flip of AC power switch to toggle to 100%
- Dim setting:  
-Fixture turns on at 10% and slowly ramps up to 100%  
-Quick flip of AC power switch during ramp-up will lock fixture at that level



PART #	UPC	DESCRIPTION
RP-1STEPDIM_30-60-100	844006057565	STEP-DIM MODULE



**RemPhos** by **Light Efficient Design**  
lighting on target

LIGHT EFFICIENT DESIGN HEADQUARTERS 188 S. Northwest Highway • Cary, IL 60013  
INNOVATION & MANUFACTURING CENTER 30 Log Bridge Road, Building 200 • Middleton, MA 01949  
847.380.3540 • led-llc.com



01.12.22 Information is subject to change without notice.