

## OPEN WAREHOUSE RETROFIT FURBAY ELECTRIC SUPPLY CO.

**DISTRIBUTOR**  
FURBAY ELECTRIC  
SUPPLY CO.

**MFG. REPRESENTATIVE**  
DYKE RIFFLE  
RIFFLE & ASSOCIATES

**CONSULTANT**  
DIPERNA ELECTRIC

**PRODUCT USED**  
LBI—Linear Barkit Internal Driver



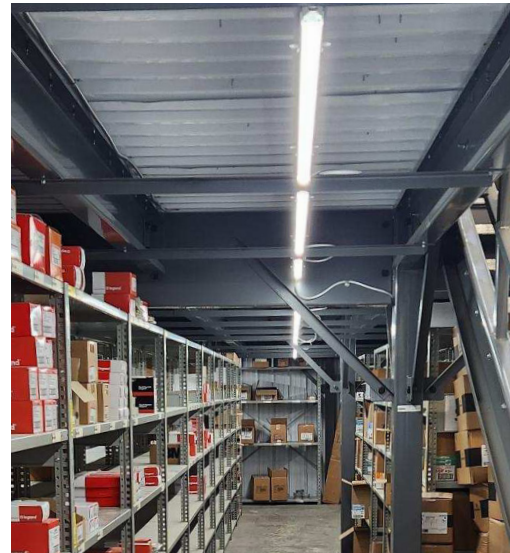
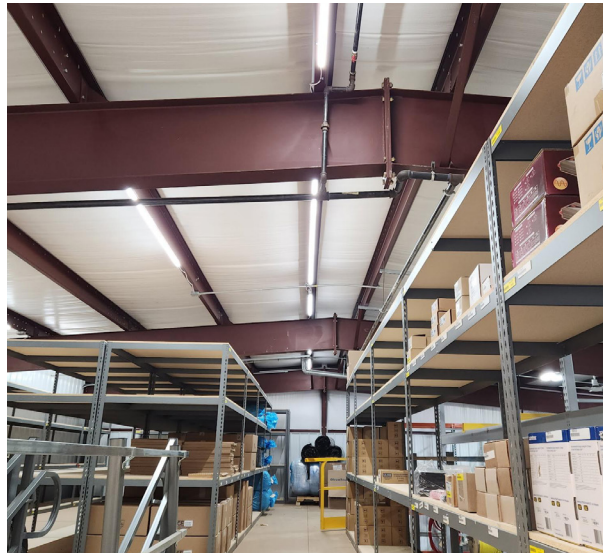
**ACCESSORIES USED**  
3 FT Incoming Power Kit



18-inch/48-inch Linking Cable



Seamless Connector



### SITUATION

Furbay Electric Supply Co was looking to upgrade their warehouse lighting. Due to the warehouse size and various ceiling heights, they needed a product that would work throughout the space, while still providing adequate lighting for their employees.

### SOLUTION

The warehouse was retrofitted with (8) 2 FT LBIs, (36) 3 FT LBIs, and (40) 4 FT LBIs. (10) Incoming power kits, (100) linking cables, and (40) seamless connectors were used with the LBIs to seamlessly retrofit the new space.

### RESULT

The LBI is designed with **SUPERFLEX** technology, allowing for custom wattage and color temperature selection. The feature made it possible for the warehouse to install the LBIs on 8 FT and 14 FT ceilings without compromising on the light output. The RemPhos LBI was ultimately chosen for its easy installation, flexibility, and superior customer support. The LBI comes backed by a 10-year warranty, guaranteeing the warehouse for years to come. Installing the LBI throughout the warehouse not only increased safety for their employees, but showcases the versatility of the LBI for their customers as well.

**'I'VE USED THIS PRODUCT FOR MANY DIFFERENT APPLICATIONS AND HAVE NEVER HAD ONE PROBLEM! I'M LOOKING FORWARD TO SELLING MORE TO OUR CUSTOMERS'**

**Light Efficient Design**