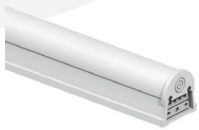


DISTRIBUTOR
PLATT ELECTRIC

MFG. REPRESENTATIVE
WILSON SALES

CONSULTANT
MOSER ELECTRIC

PRODUCT USED
LBI-Linear Barkit Internal Driver



ACCESSORIES USED
Seamless Connector



Suspended In-Line Kit



ELECTRICAL DISTRIBUTORS SHOWROOM PLATT ELECTRIC - POCATELLO, IDAHO



SITUATION

Platt Electric in Pocatello, ID, required a lighting retrofit for their product showroom. The showroom was previously fitted with outdated single T8 tubes. The RemPhos Linear Barkit Internal Driver (LBI) was chosen to retrofit the showroom.

SOLUTION

The existing T8 tubes (consuming over 960W) were replaced with a total of (44) 4 FT LBIs, bringing the consumption down to 660W. With the ability to seamlessly connect, the longest connection installed measured 32 FT.

RESULT

With the flexible installation options available for the LBI, Platt was able to provide a unique lighting design for the showroom while also doubling as a product display. The additional illumination was a dramatic improvement from the previous fluorescent lighting it replaced, increasing the foot candles from 30 to 40. The final product resulted in a one-of-a-kind installation, with more even lighting throughout the showroom. Looking at the before and after, you can see just how much the illumination and overall aesthetic improved. Ultimately, Platt Electric chose to use RemPhos for its customer support and experience.

**'THE ADDITIONAL ILLUMINATION WAS A DRAMATIC
IMPROVEMENT FROM THE PREVIOUS FLUORESCENT LIGHTING'**

Light Efficient Design